

# *COR-KNOT*<sup>®</sup> Device Overview

4/29/2025

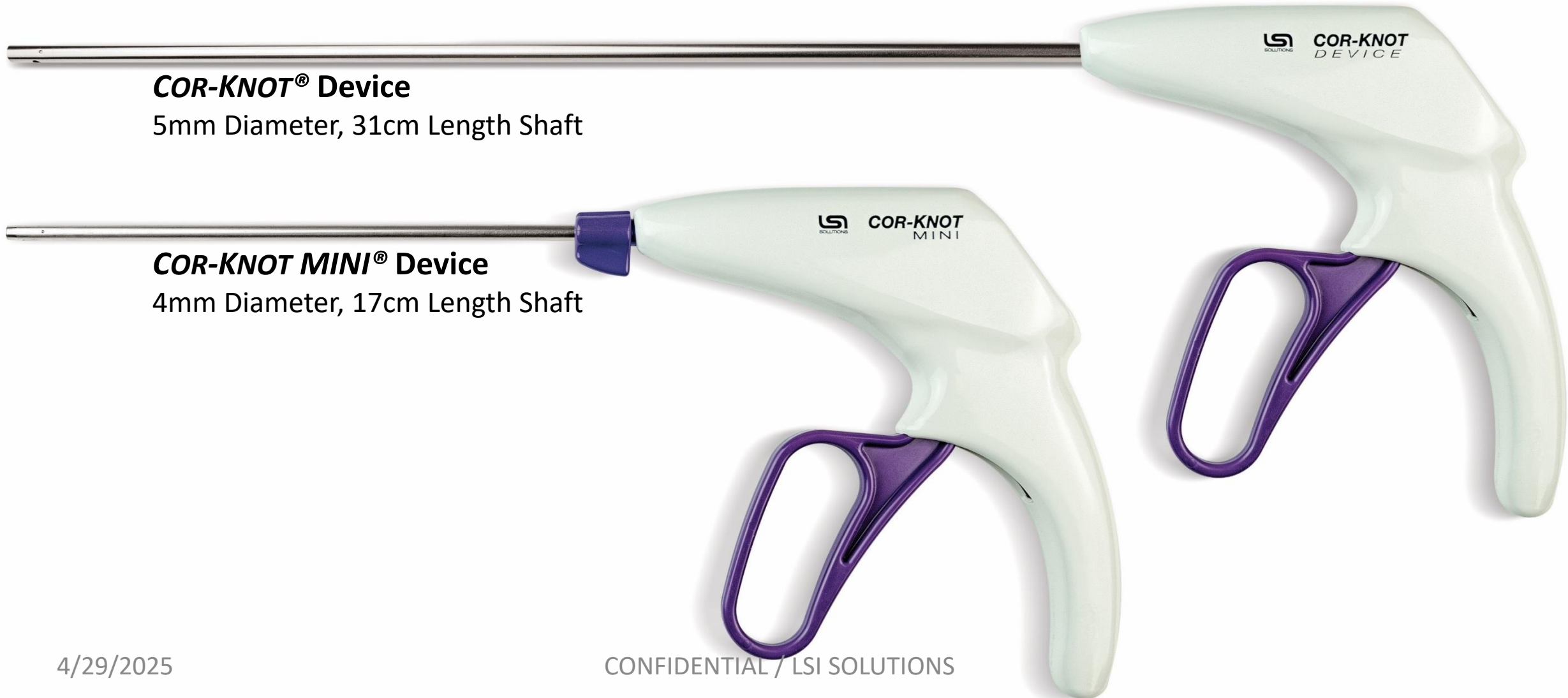
CONFIDENTIAL / LSI SOLUTIONS



# COR-KNOT<sup>®</sup> Specifications

## **COR-KNOT<sup>®</sup> Device**

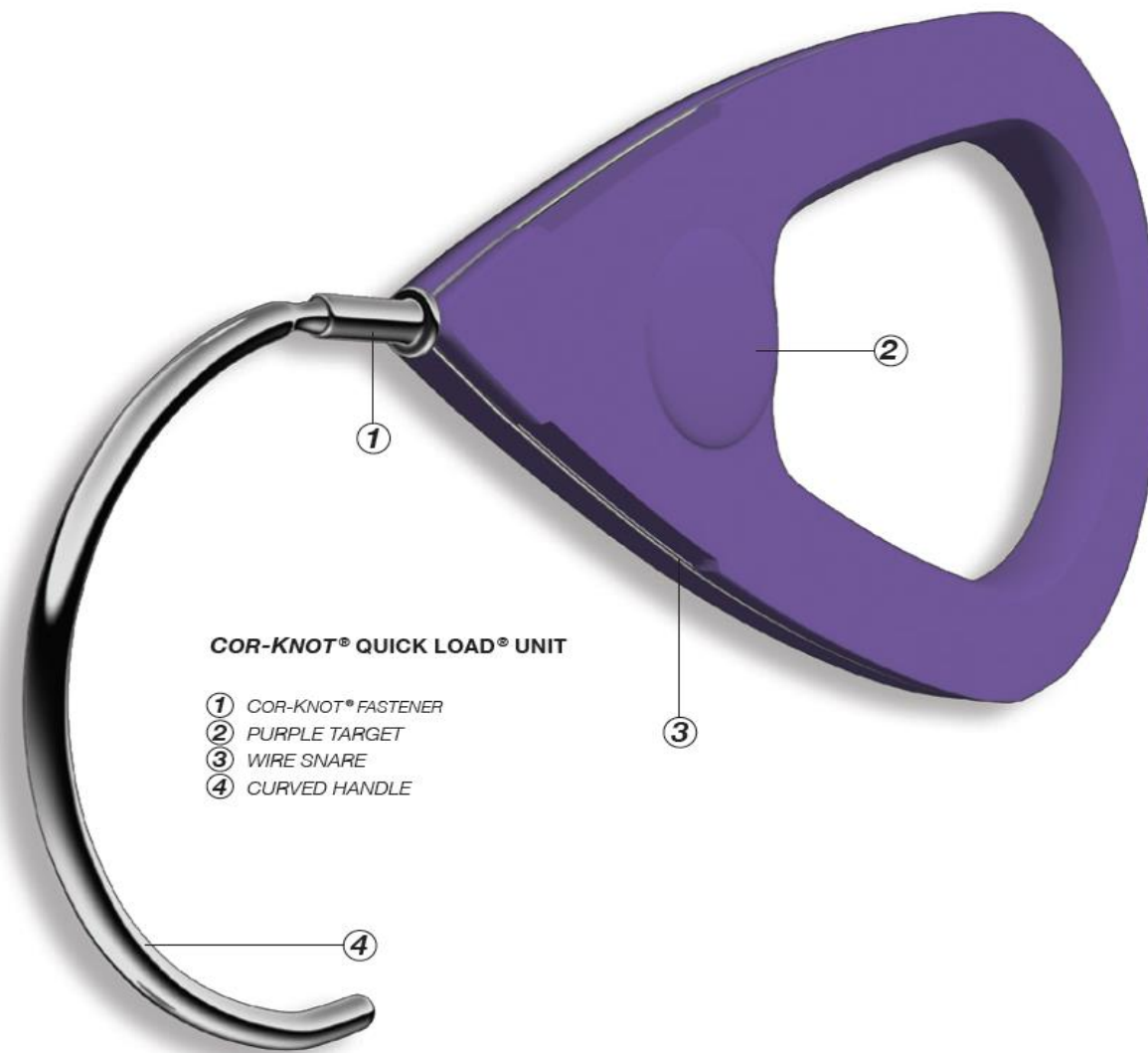
5mm Diameter, 31cm Length Shaft



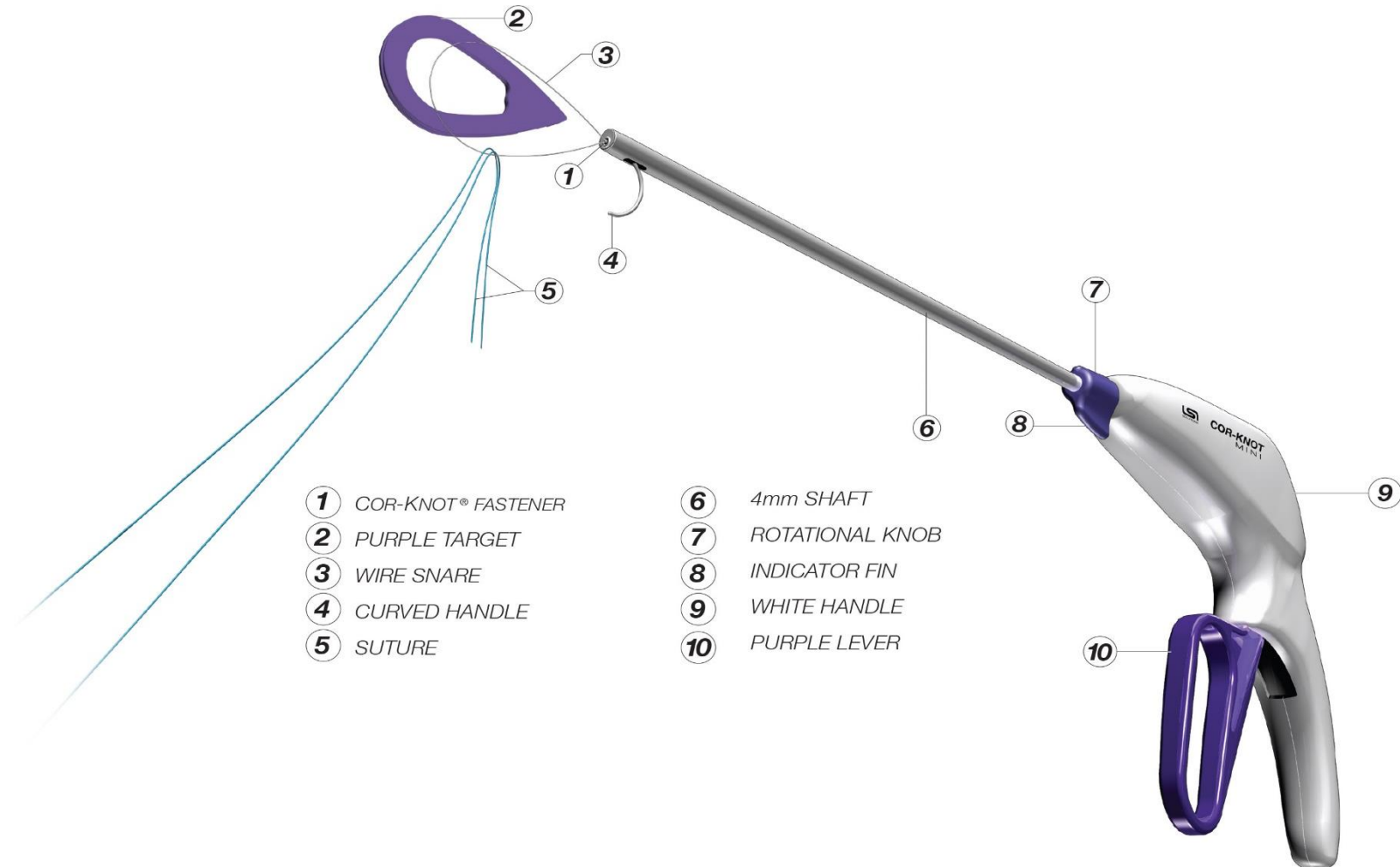
## **COR-KNOT MINI<sup>®</sup> Device**

4mm Diameter, 17cm Length Shaft

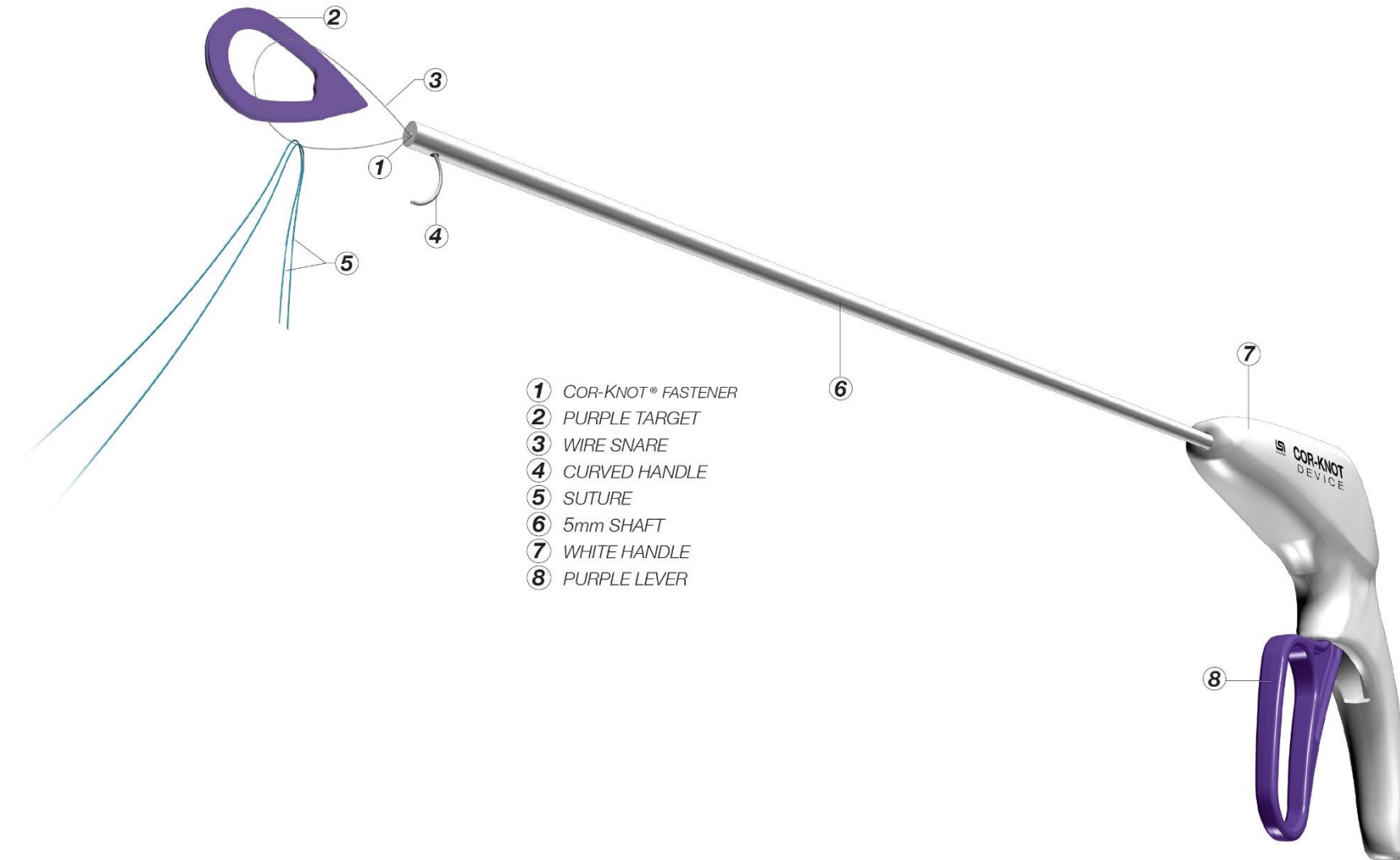
# COR-KNOT<sup>®</sup> QLU Anatomy



# COR-KNOT MINI<sup>®</sup> Anatomy



# COR-KNOT<sup>®</sup> Anatomy



# Device Loading *(at the scrub table)*

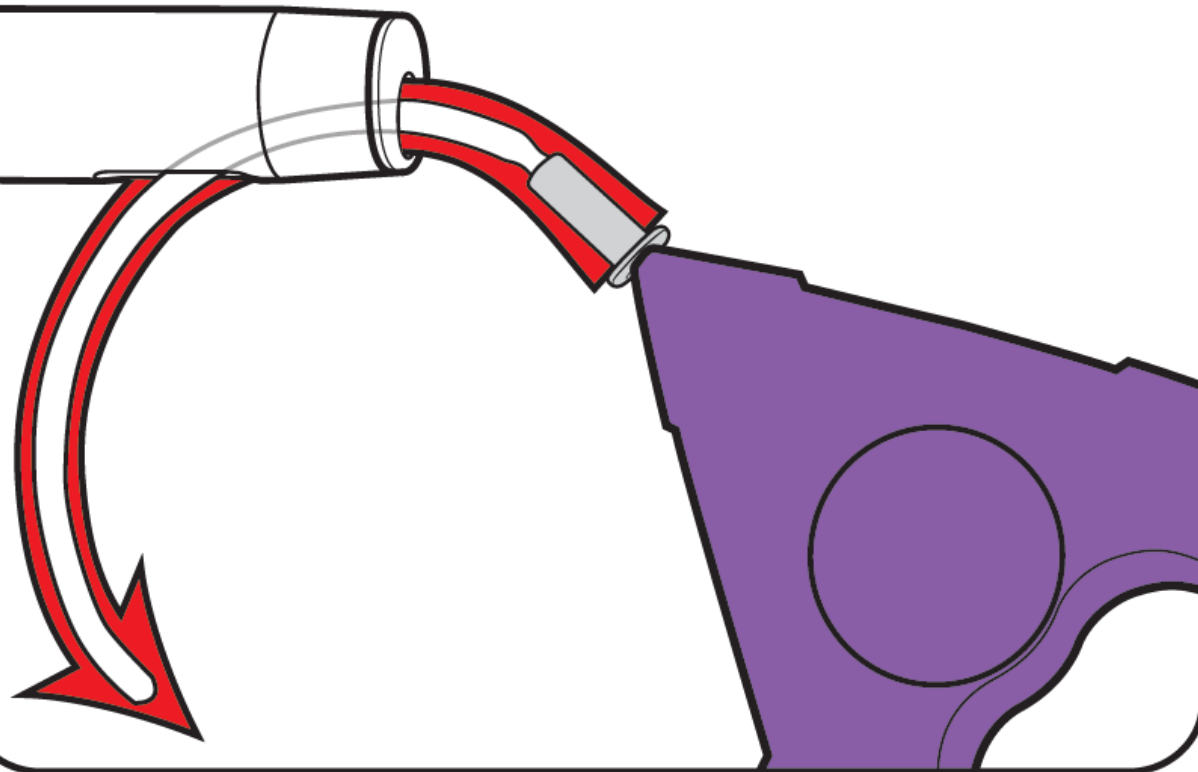
4/29/2025

CONFIDENTIAL / LSI SOLUTIONS



# 1) Insert

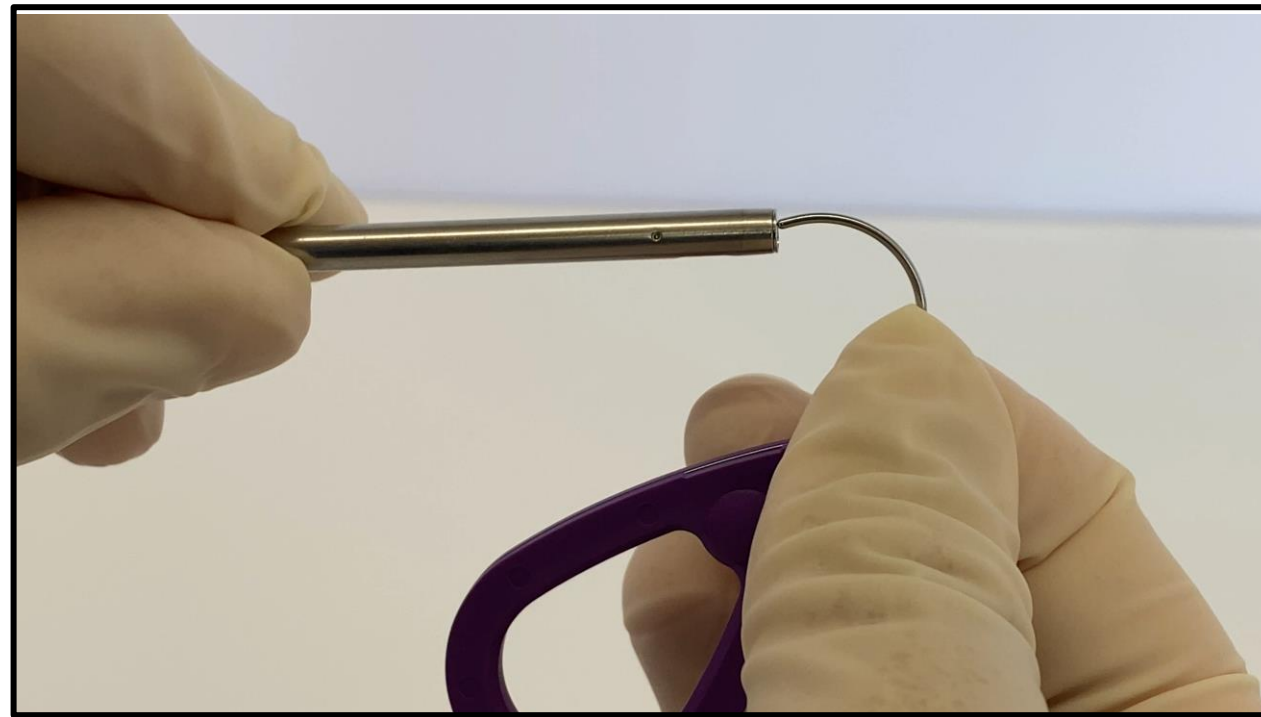
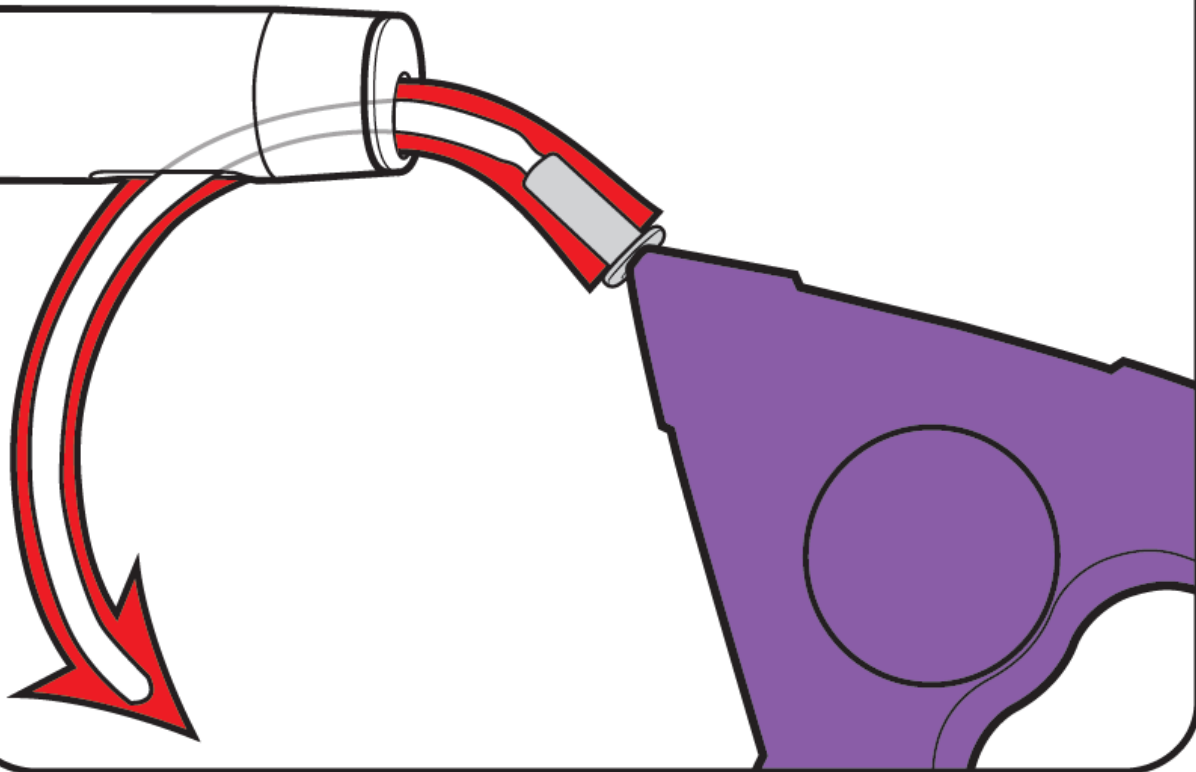
## 1 **INSERT**



**INSERT** the blunt tip of the curved handle into the distal slot at the end of the *COR-KNOT MINI<sup>®</sup> DEVICE* shaft. **ROTATE** the curved handle through the distal slot and out of the suture slot until the *COR-KNOT<sup>®</sup> FASTENER* occupies the shaft's distal slot. Fully **ENGAGE** the *COR-KNOT<sup>®</sup> FASTENER* within the tip of the *COR-KNOT MINI<sup>®</sup> DEVICE* by pushing on the purple target or by pulling on the curved handle.

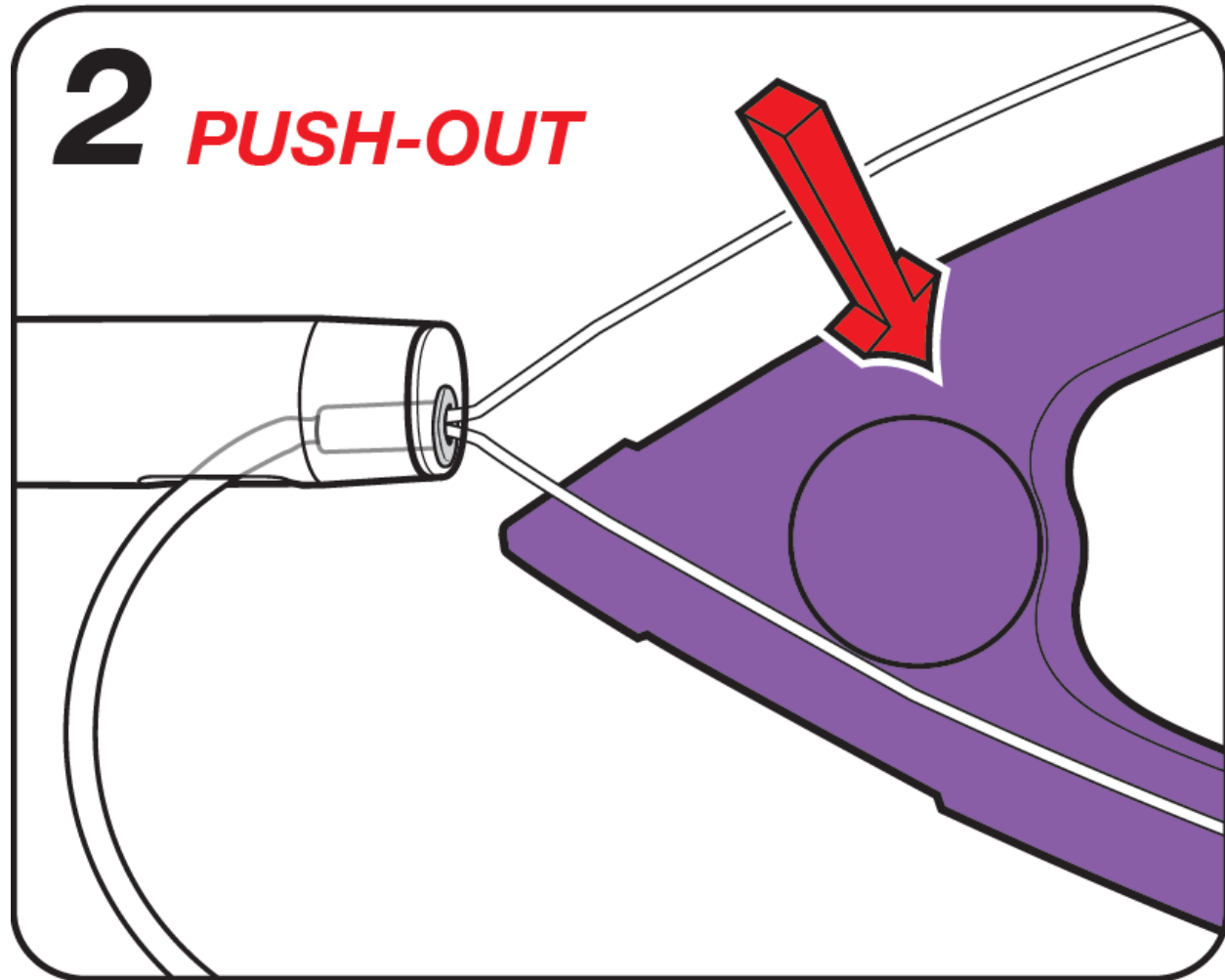
# 1) Insert

**1** *INSERT*



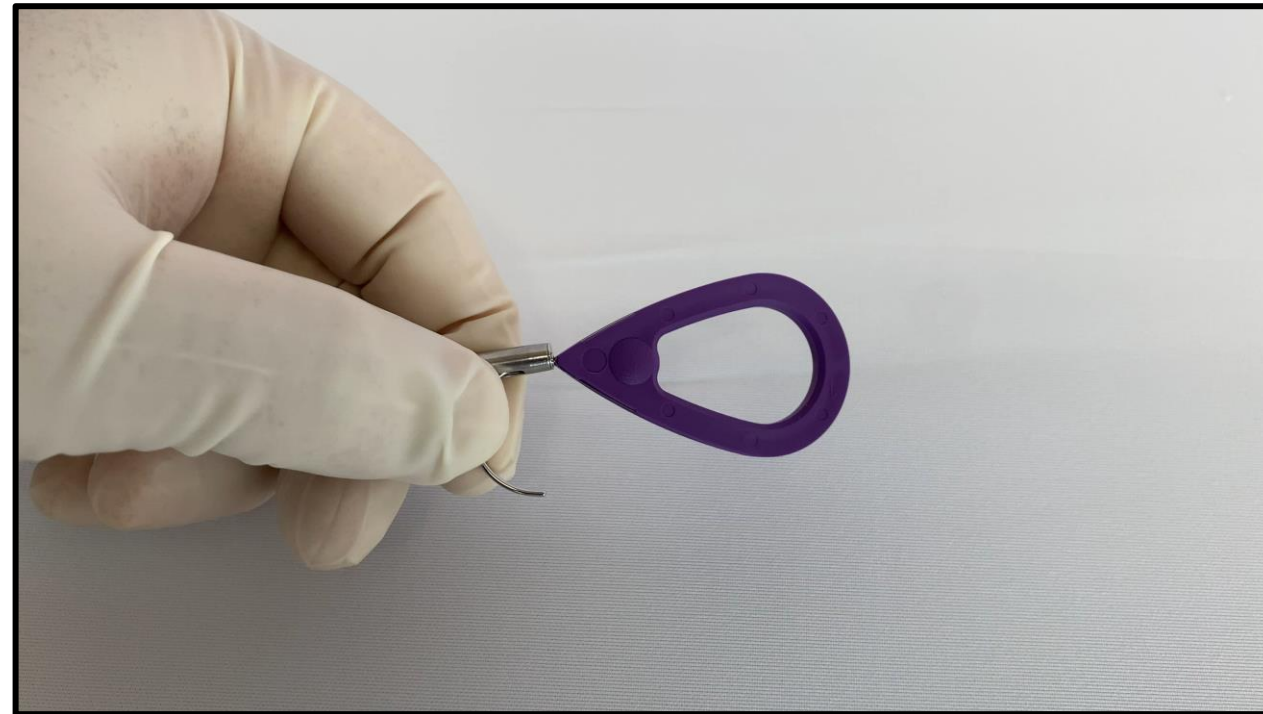
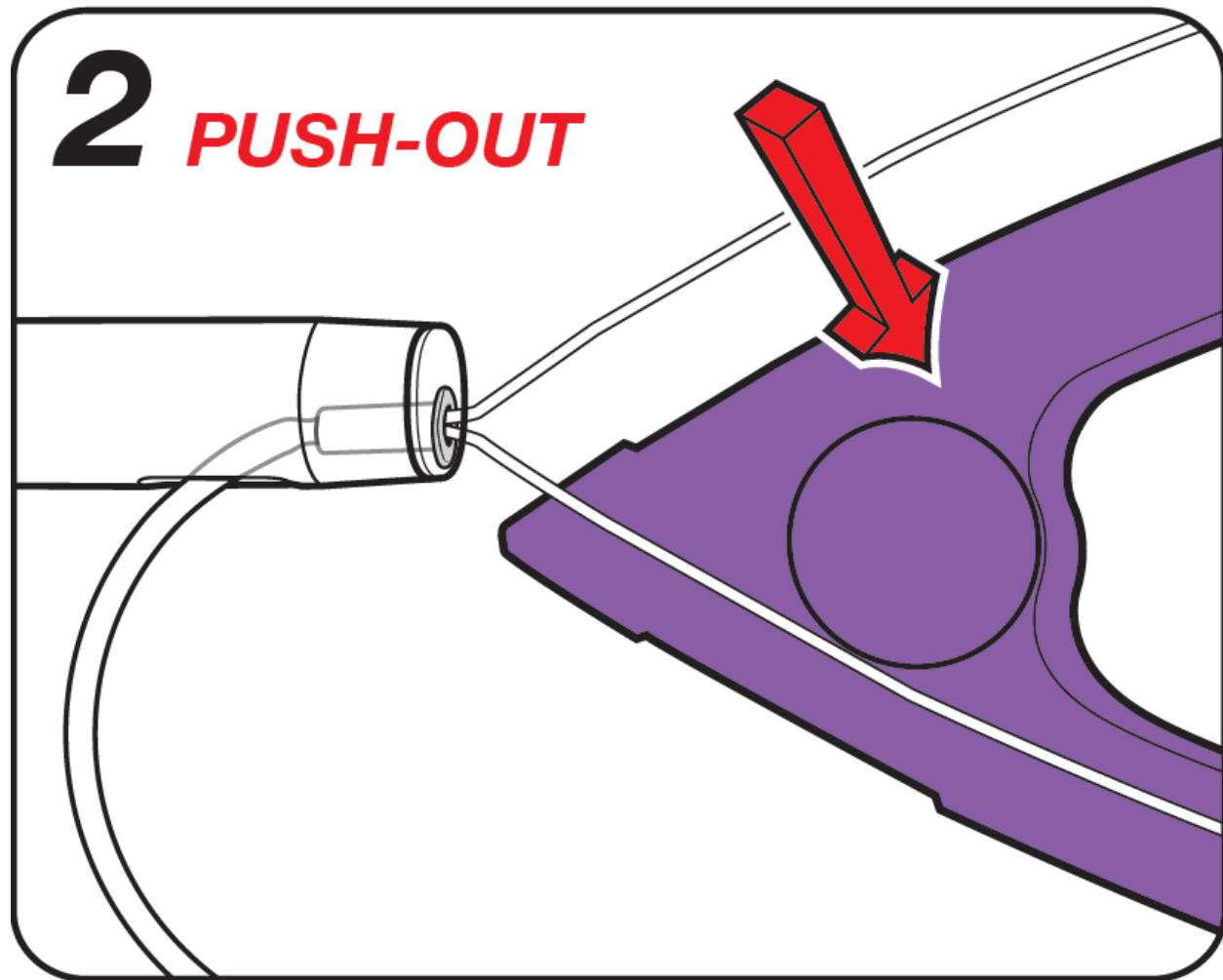
# 2) Push-Out

**2** ***PUSH-OUT***



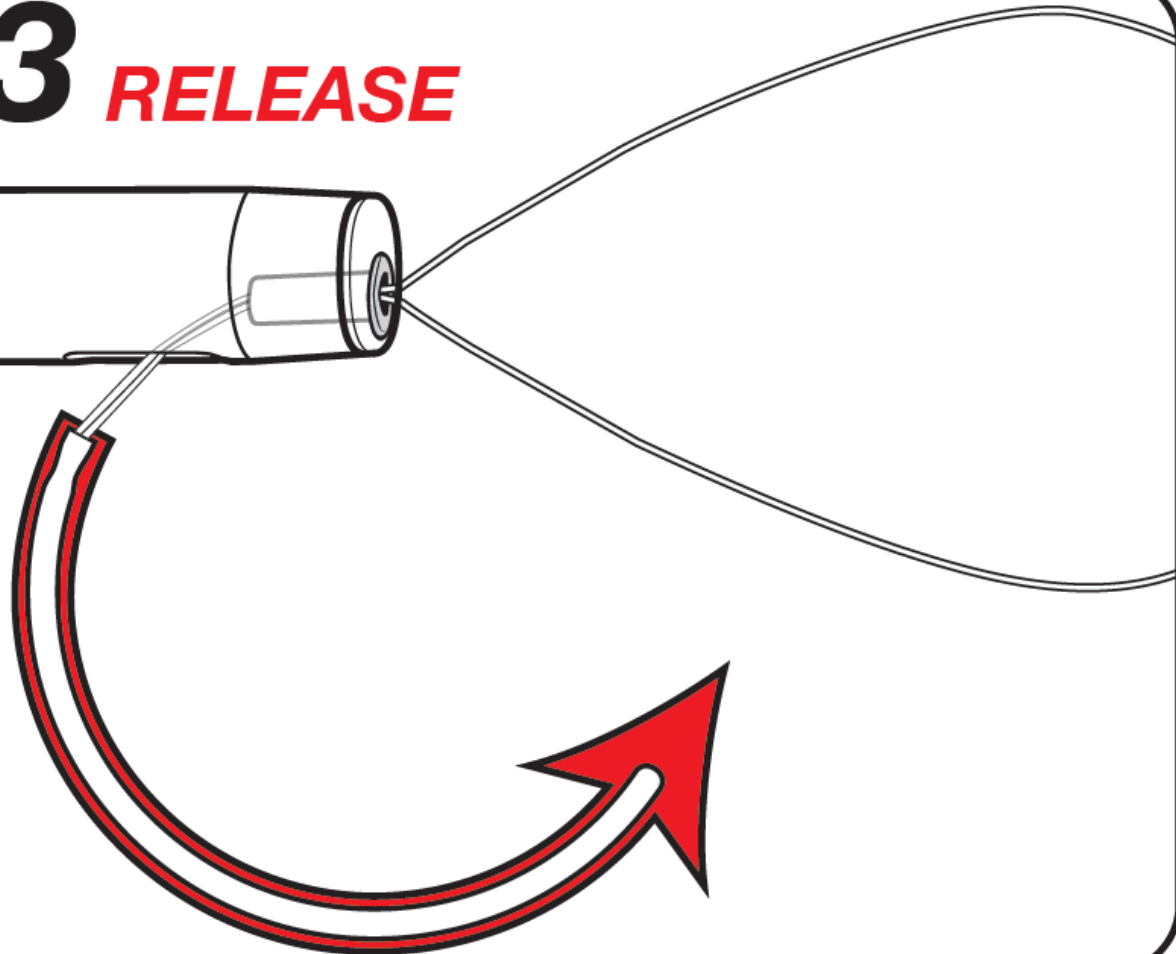
**PUSH-OUT** and remove the purple target.

# 2) Push-Out



# 3) Release

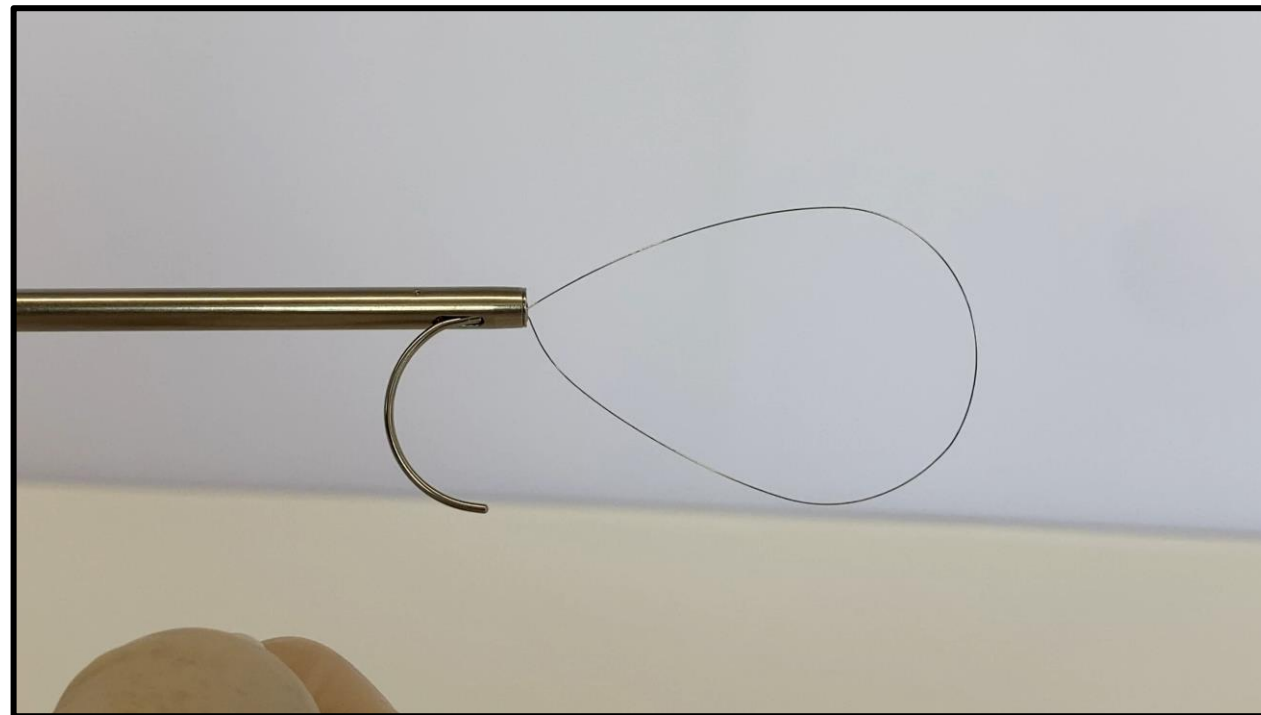
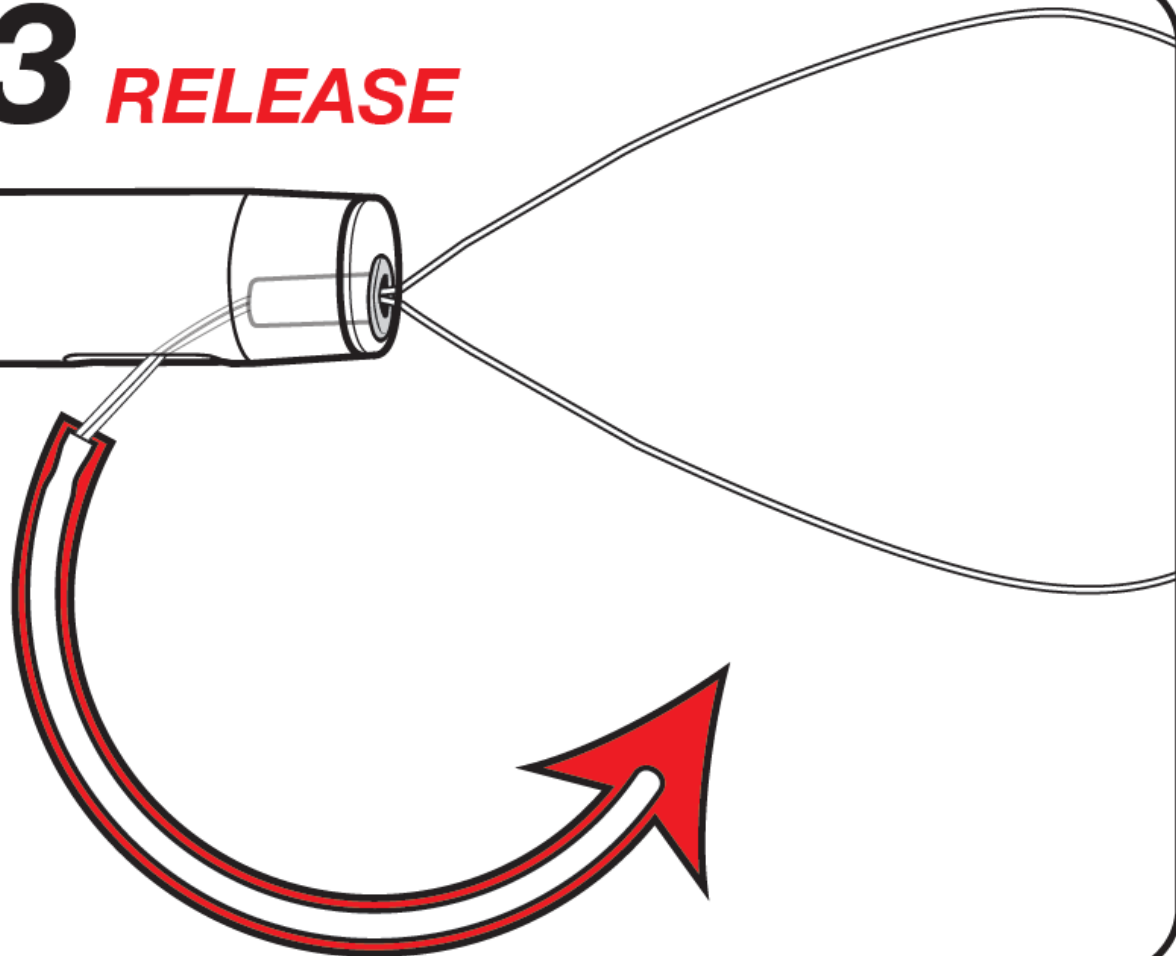
## 3 **RELEASE**



**RELEASE** the curved handle from the distal slot at the end of the *COR-KNOT MINI<sup>®</sup> DEVICE* shaft.

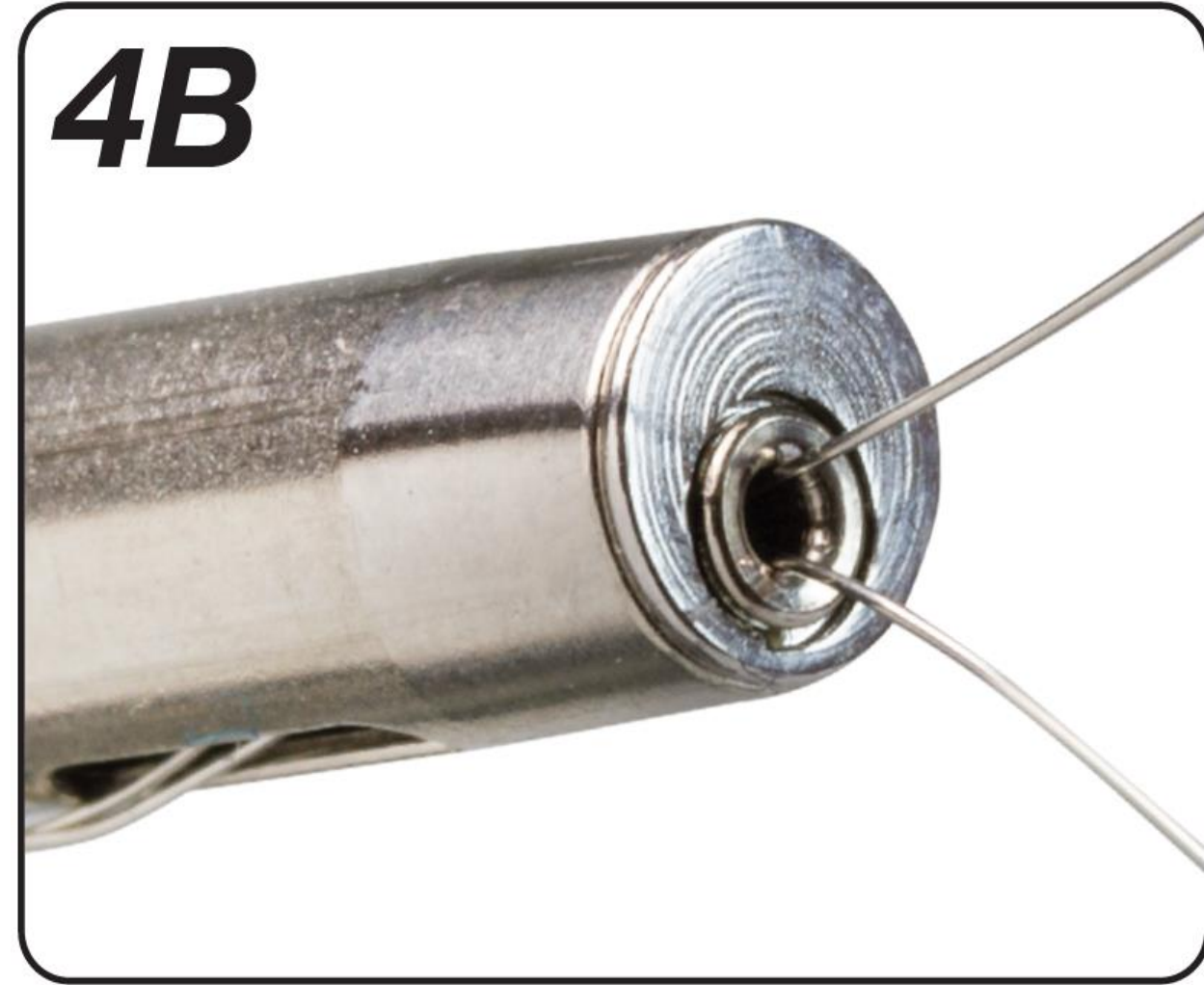
# 3) Release

**3** *RELEASE*



# 4) Inspect

**4B**



**INSPECT** to ensure that the *COR-KNOT® FASTENER* is well loaded and fully seated.

# Outside of Patient

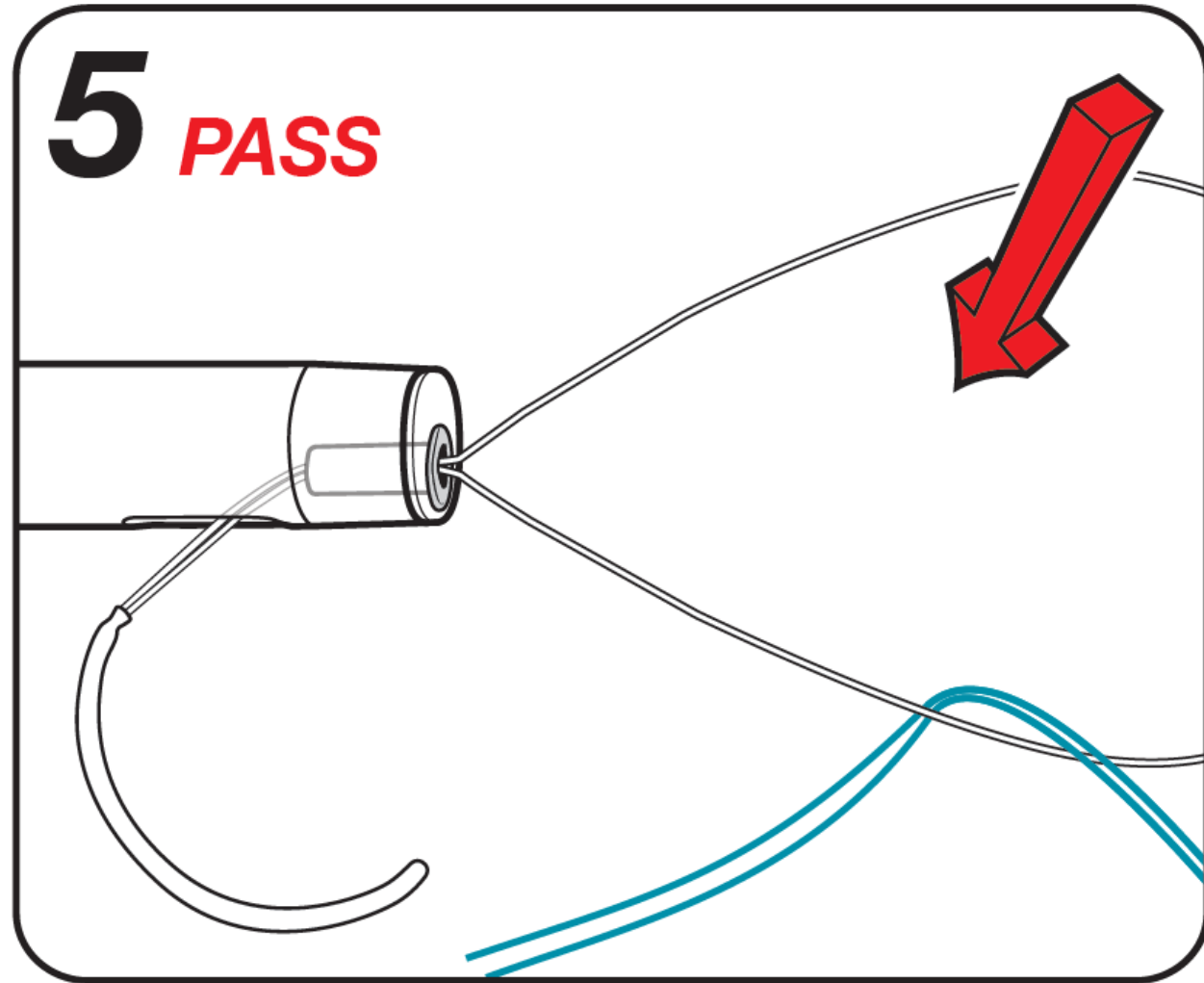
4/29/2025

CONFIDENTIAL / LSI SOLUTIONS



# 5) Pass

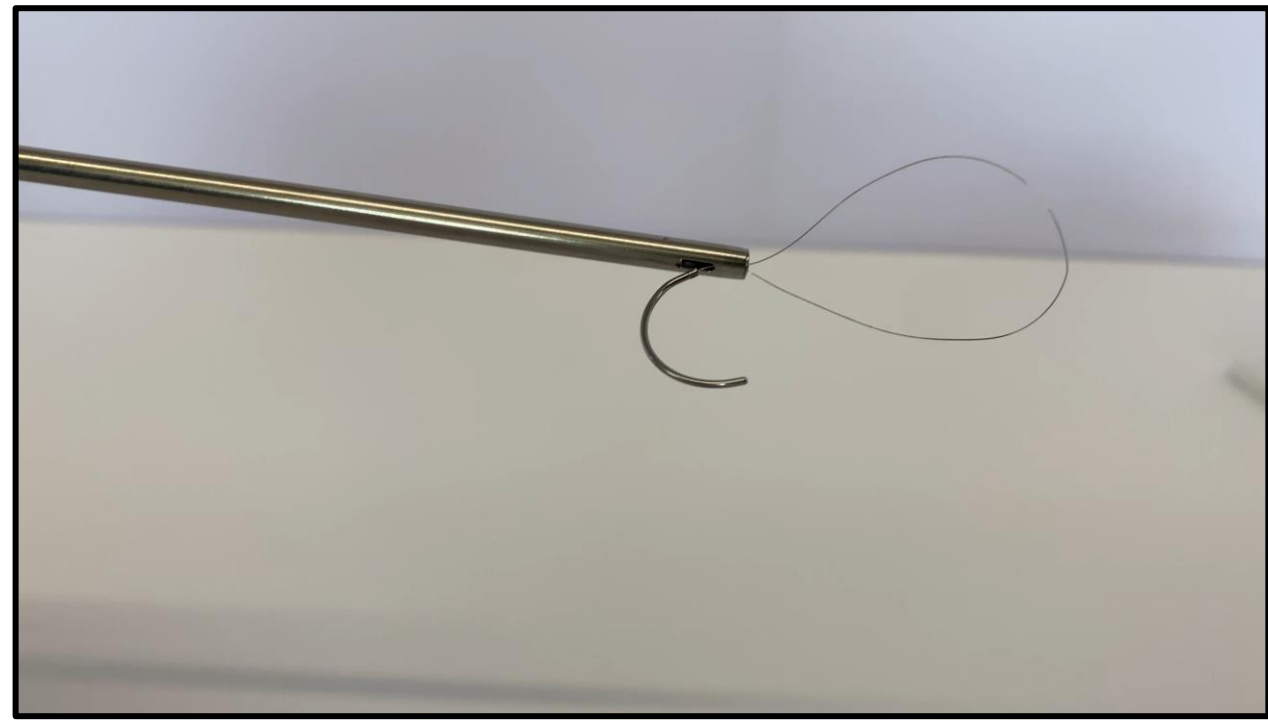
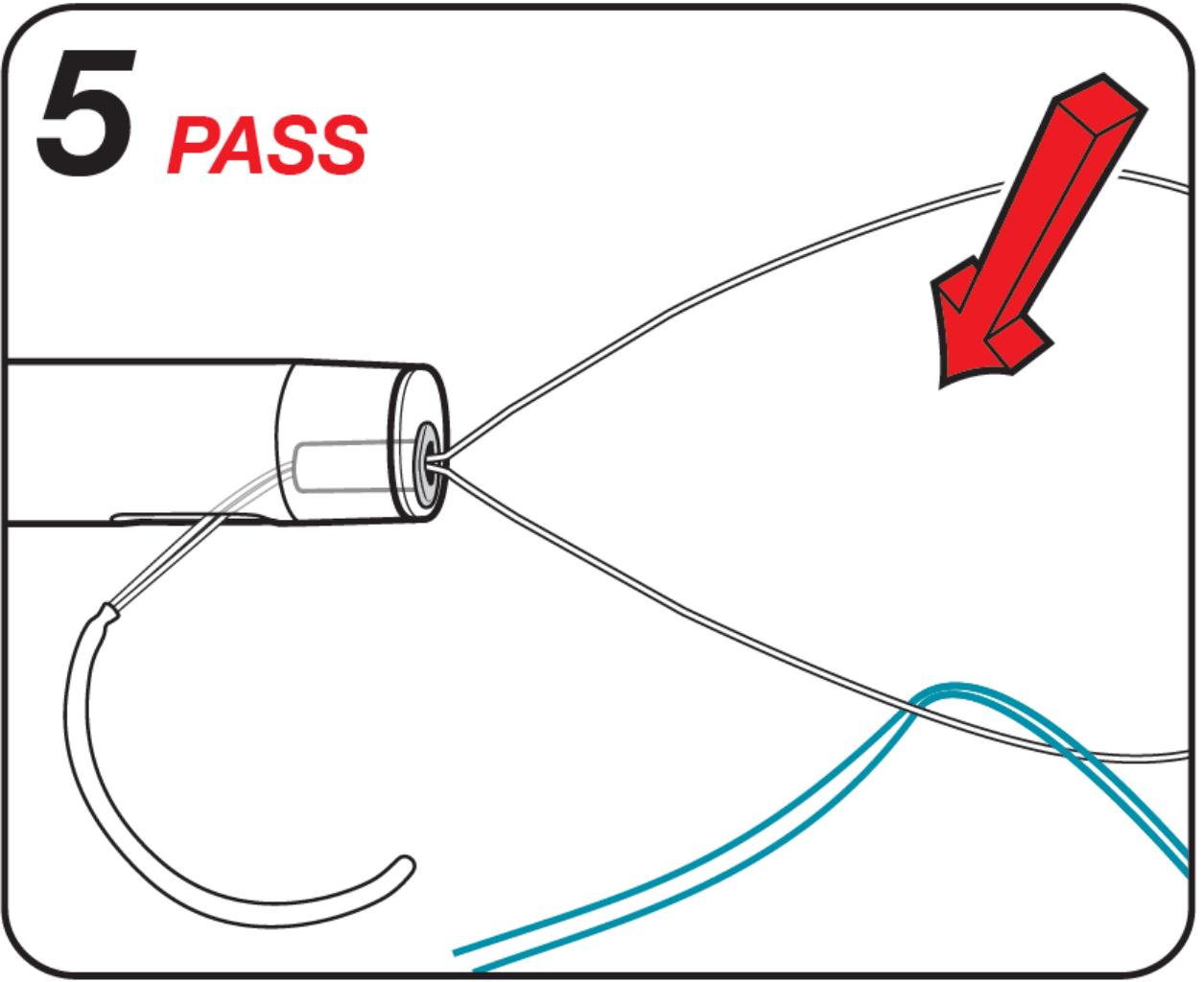
**5** *PASS*



**PASS** both ends of the suture through the open wire snare at the end of the shaft.

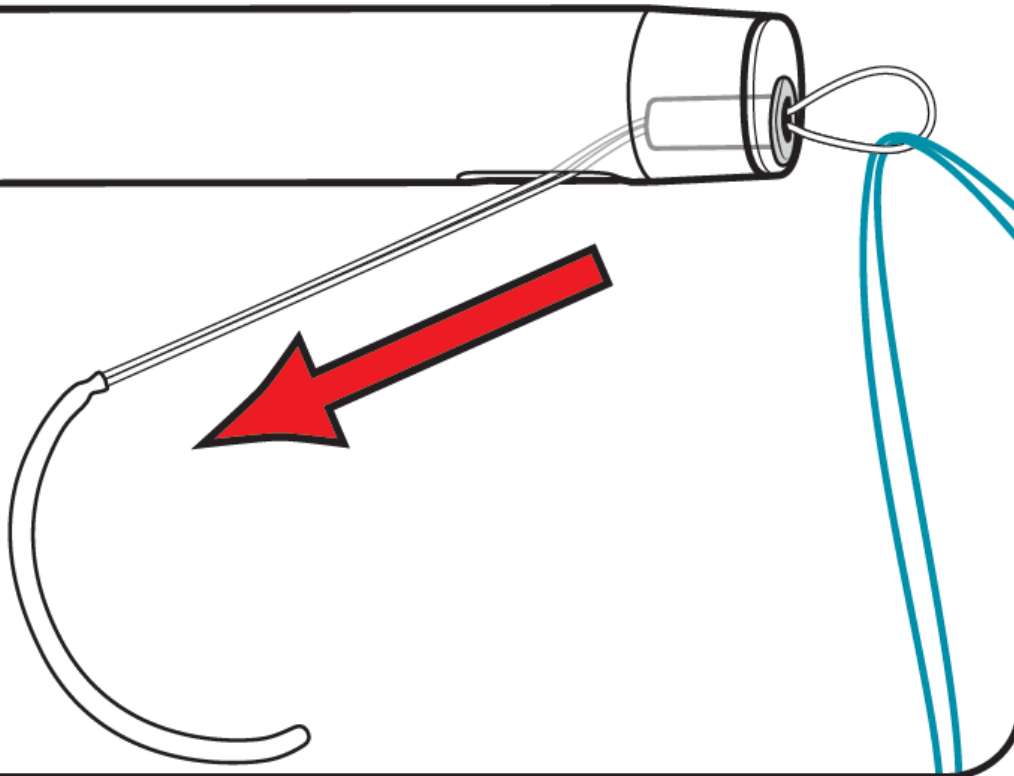
# 5) Pass

**5** *PASS*



# 6) Pull

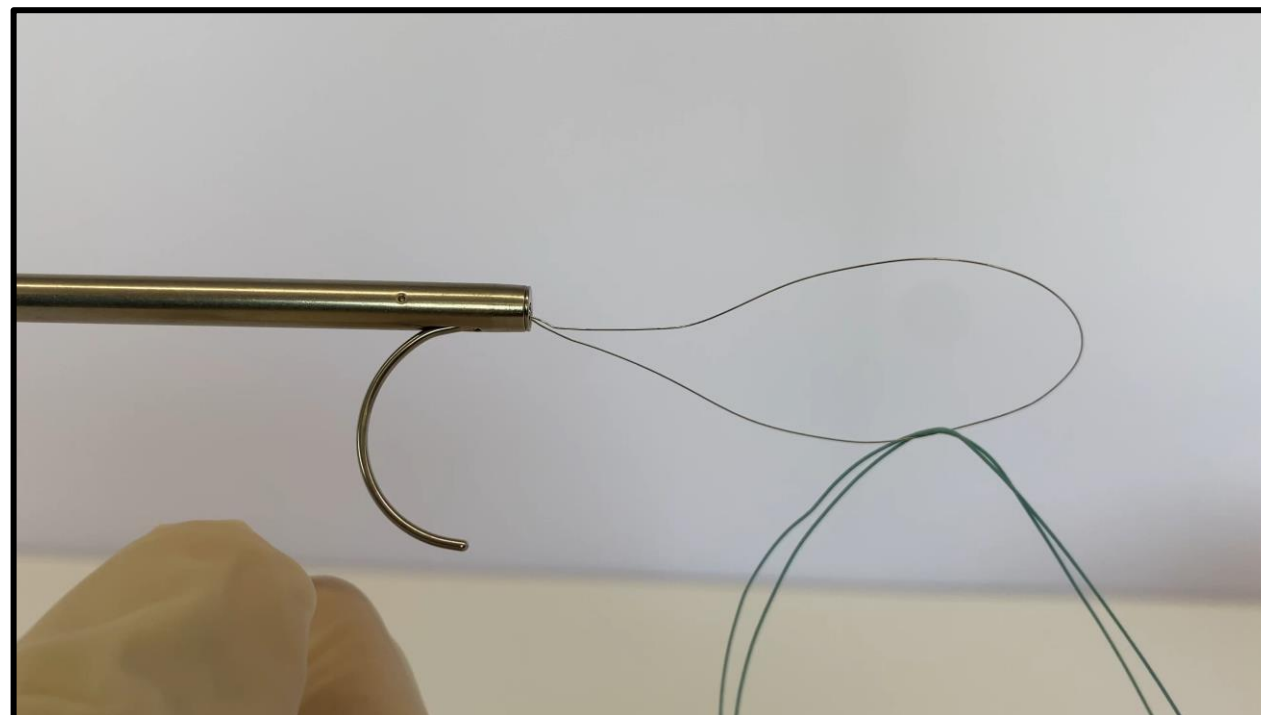
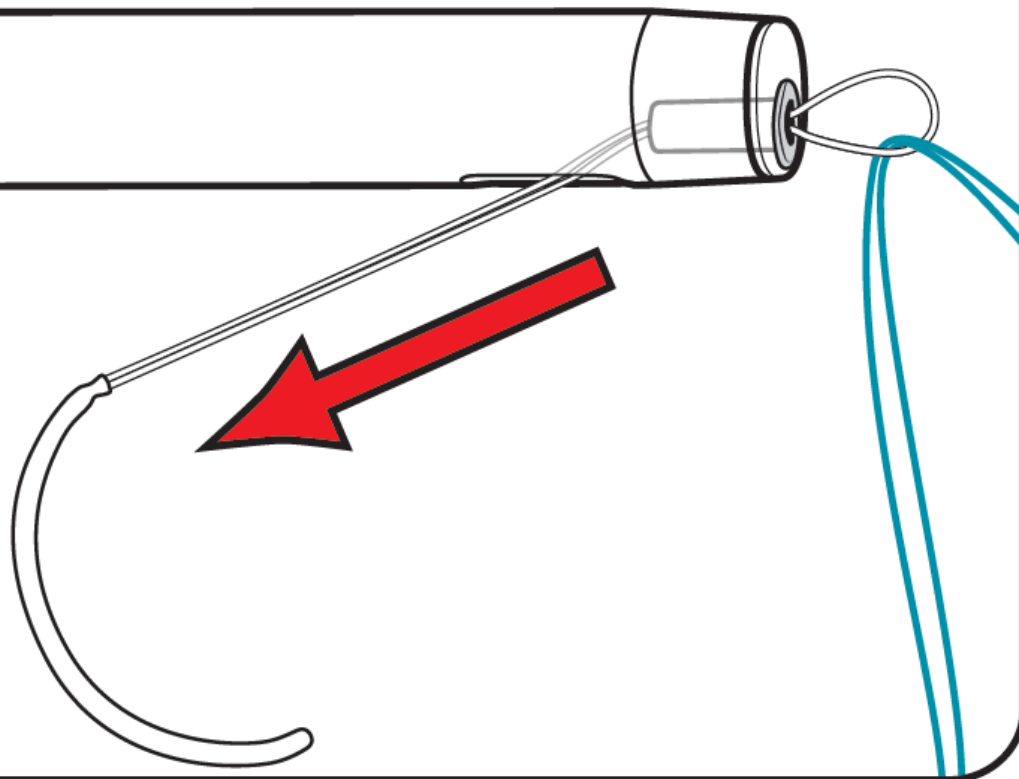
**6** *PULL*



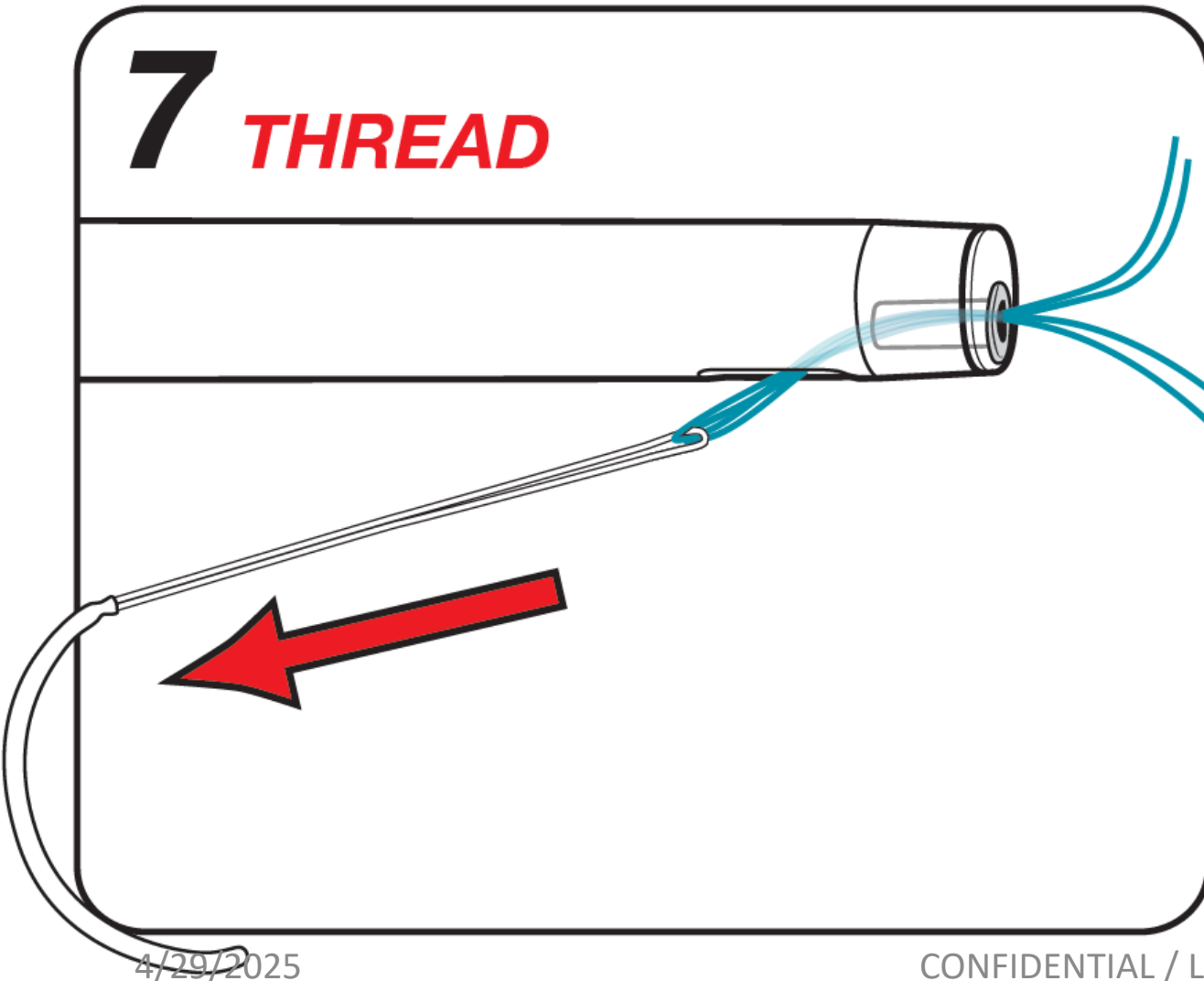
**PULL** the curved handle with its attached wire snare containing the suture ends towards the purple lever to draw the snared bends in the suture into the *COR-KNOT*<sup>®</sup> *FASTENER*.

# 6) Pull

**6** *PULL*

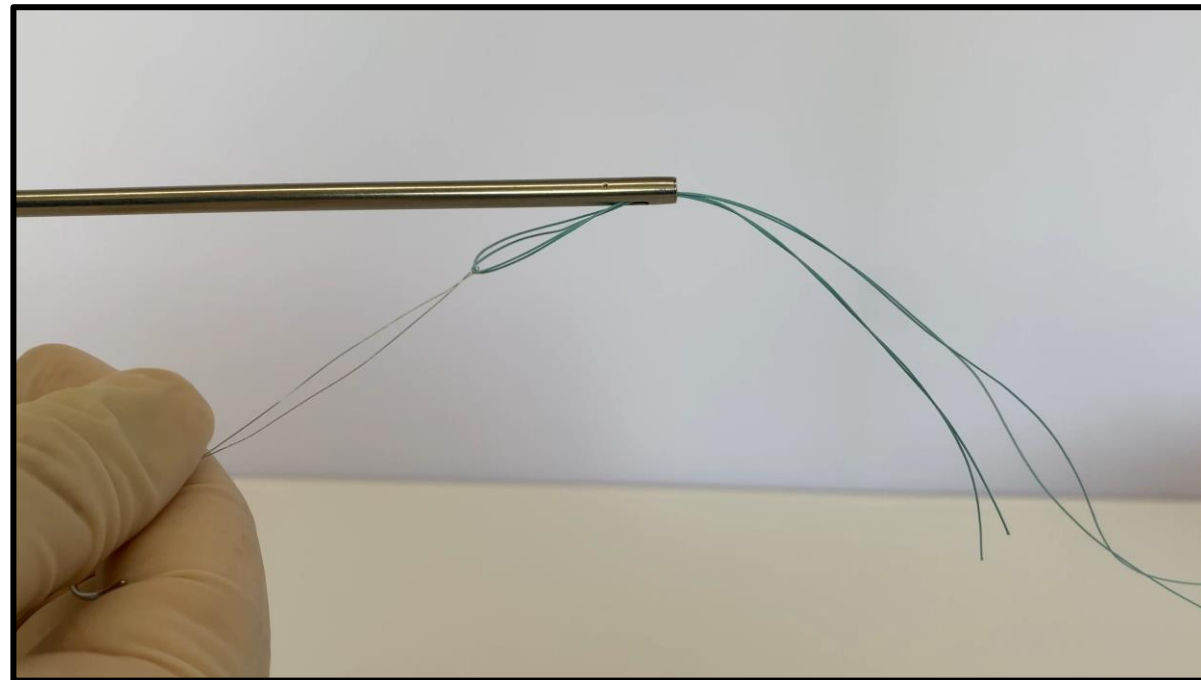
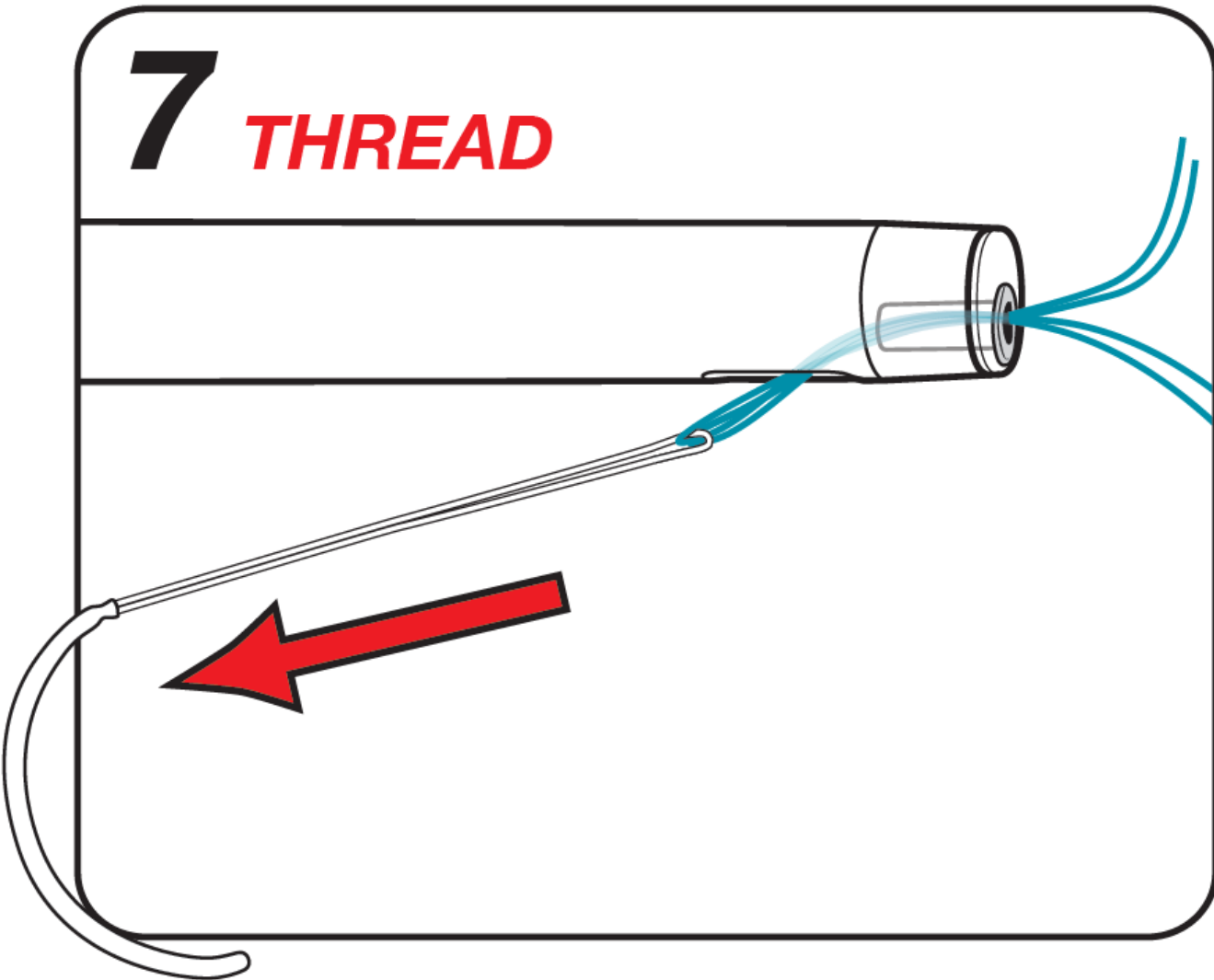


# 7) Thread



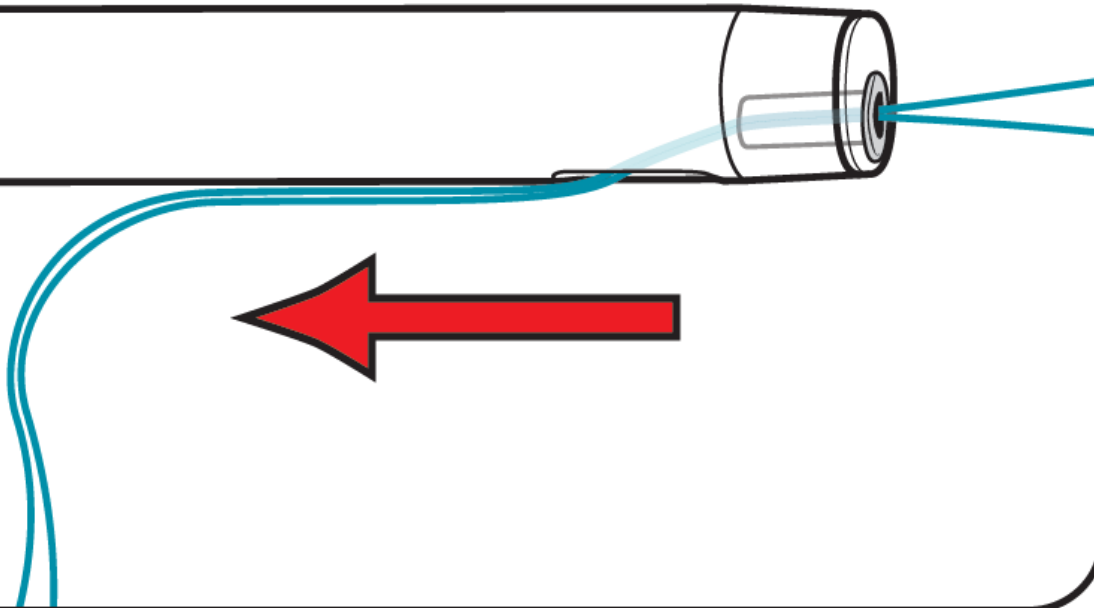
**THREAD** the suture through the *COR-KNOT*<sup>®</sup> *FASTENER* and out of the suture slot near the end of the shaft by continuing to pull the curved handle until the wire snare and both ends of the suture exit through the suture slot.

# 7) Thread



# 8a) Grasp

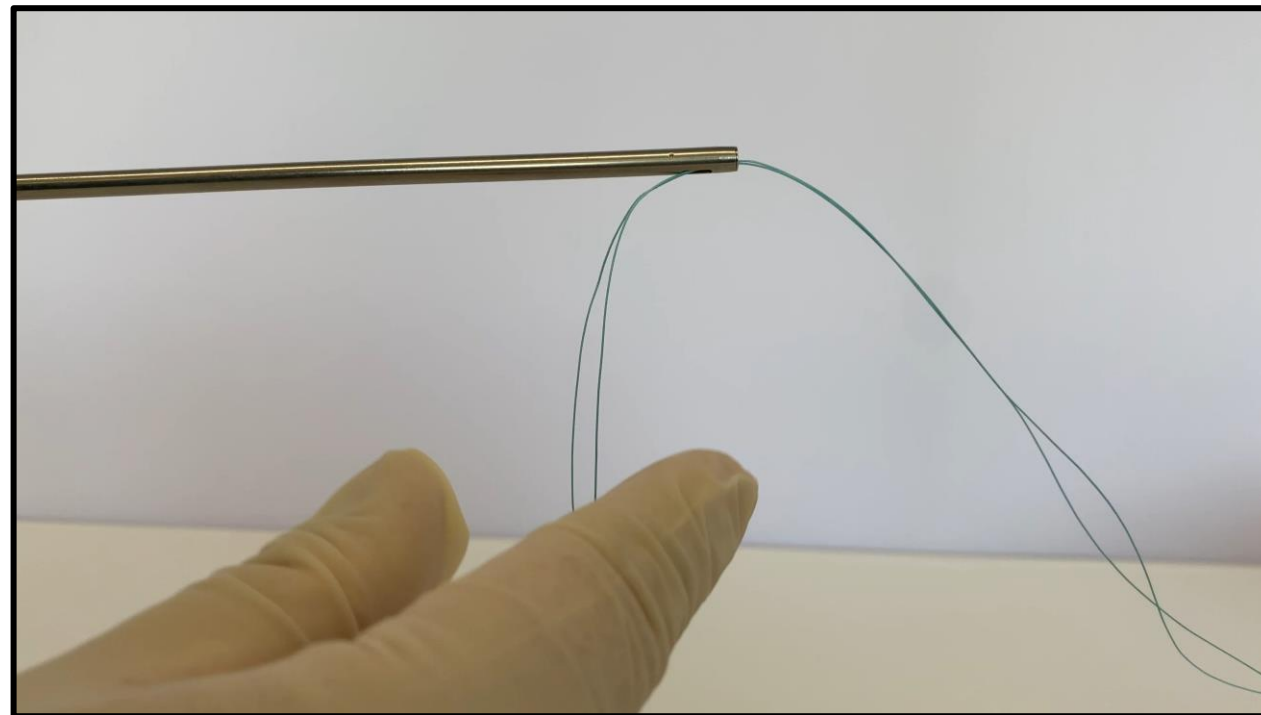
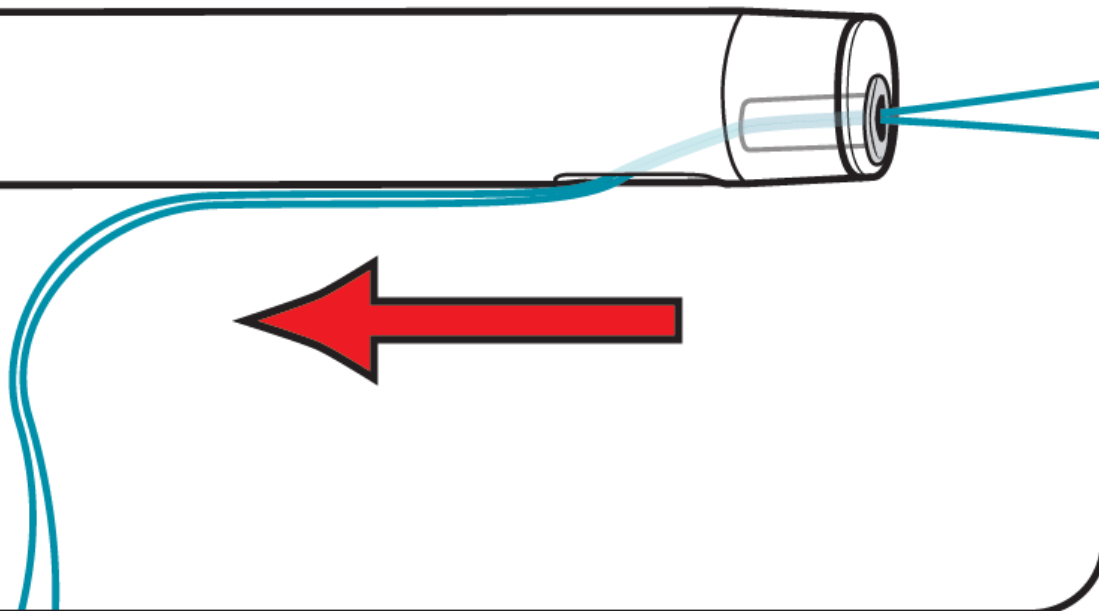
## 8A *GRASP*



**GRASP** both ends of the suture after passing off the curved handle with the wire snare.

# 8a) Grasp

**8A** *GRASP*



# 8b) Inspect

## **8B** *INSPECT*



**INSPECT** to ensure fastener is fully seated in distal device tip.

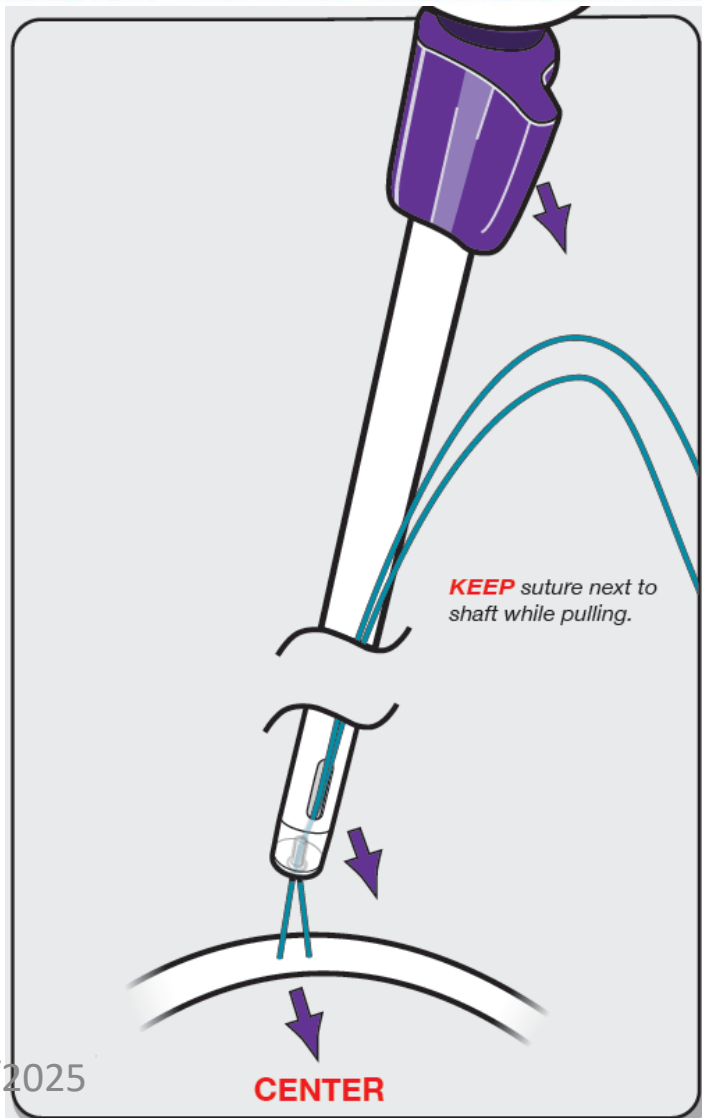
# Inside of Patient

4/29/2025

CONFIDENTIAL / LSI SOLUTIONS



# 9) Slide (*COR-KNOT*<sup>®</sup>MINI)



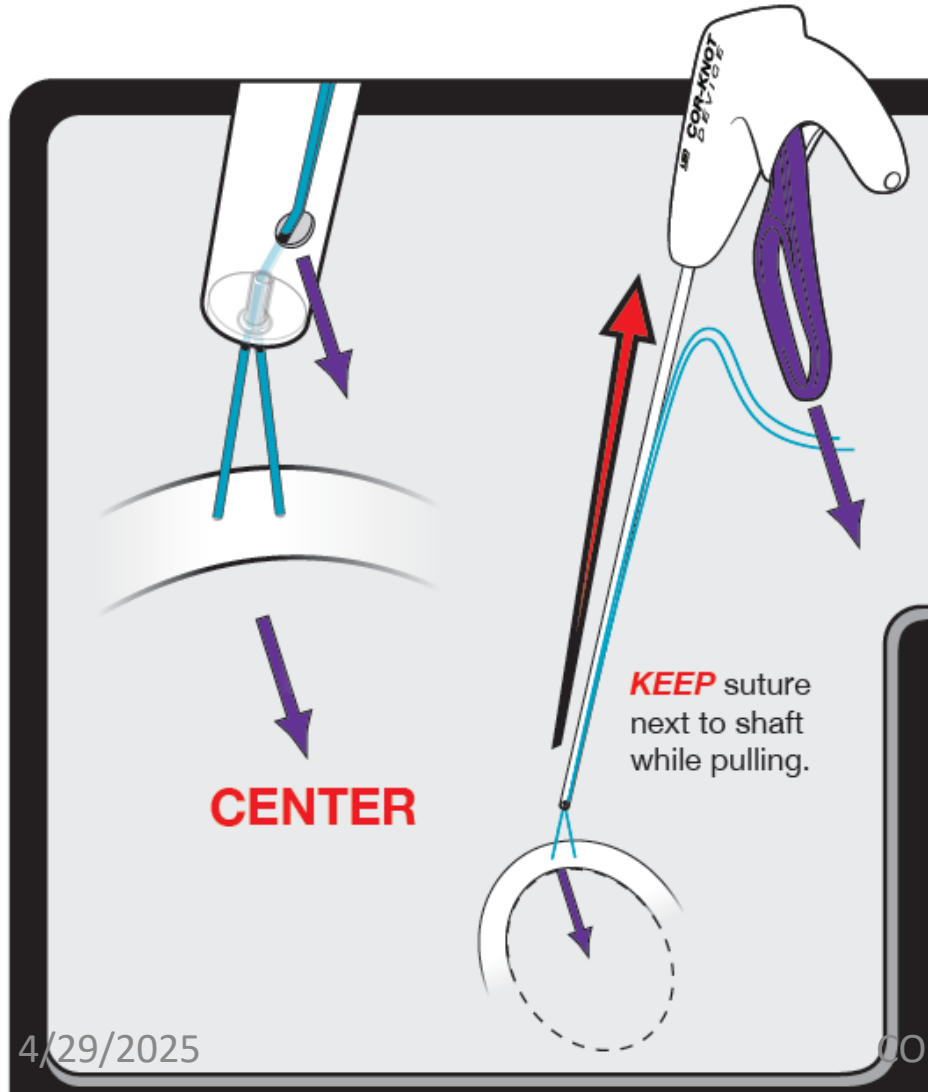
**SLIDE** the *COR-KNOT*<sup>®</sup> device distal tip gently over the partially tensioned suture down to the targeted site with suture slot and rotational knob's indicator fin oriented toward the center of the prosthesis.

# ***FIN* IN**

*Always rotate the fin in towards the center of the prosthesis to ensure fasteners and suture tails are oriented away from the valve leaflets.*



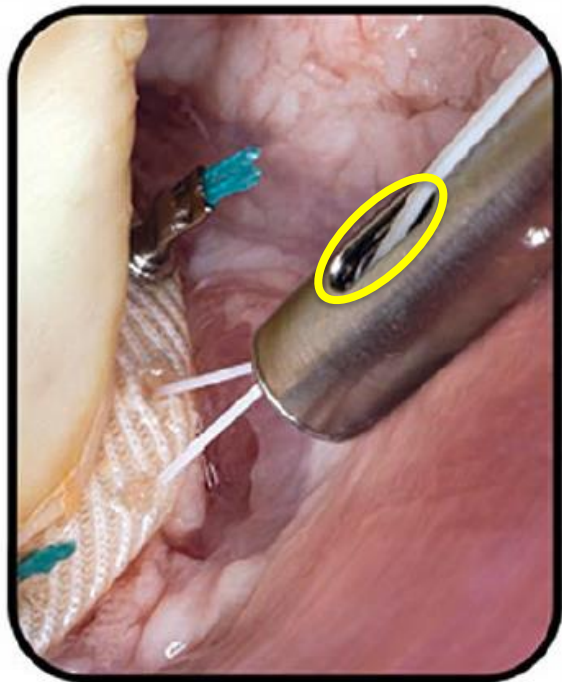
# 9) Slide (COR-KNOT<sup>®</sup>MIS)



**SLIDE** the COR-KNOT<sup>®</sup> device distal tip gently over the partially tensioned suture down to the targeted site with suture exit hole and purple lever **oriented toward the center** of the prosthesis

# Importance of Orientation

**SLIDE**



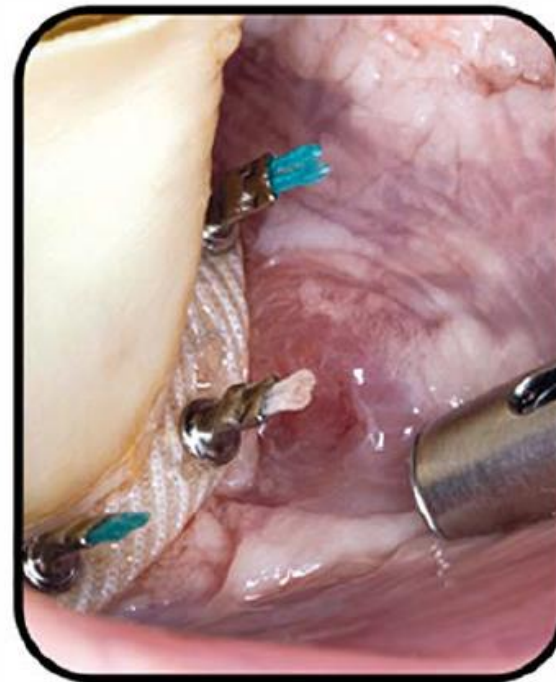
Suture Slot Faces Center

**SQUEEZE & HOLD**



Compression & Tension

**TUG & RELEASE**



Squeeze Lever Only Once

**REMOVE DEVICE**



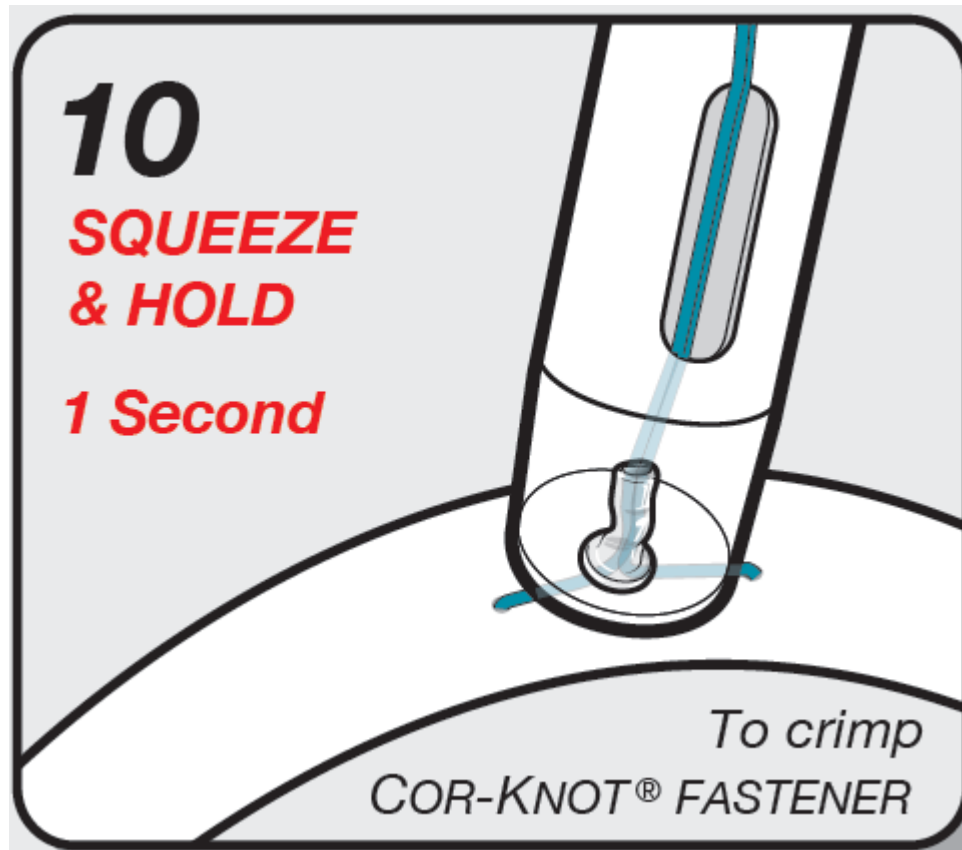
Inspect Fastener



4/29/2025

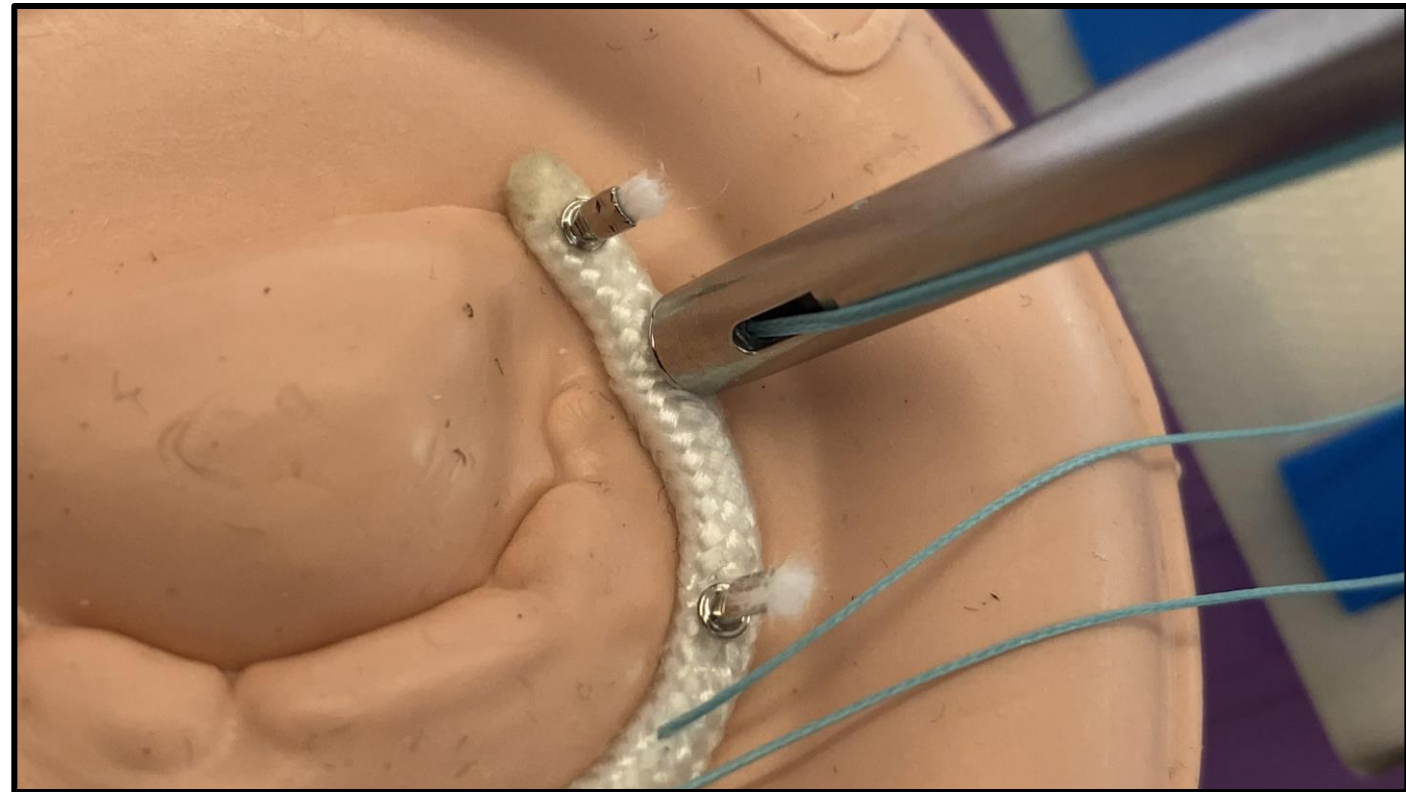
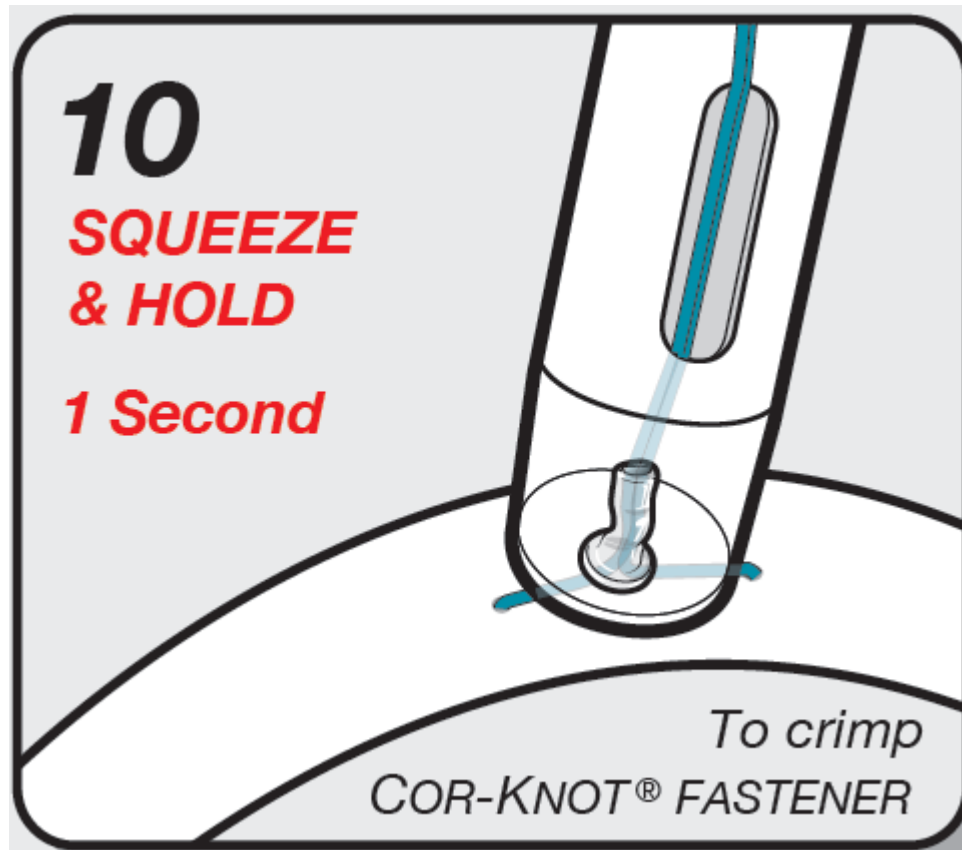
CONFIDENTIAL / LSI SOLUTIONS

# 10) Squeeze & Hold

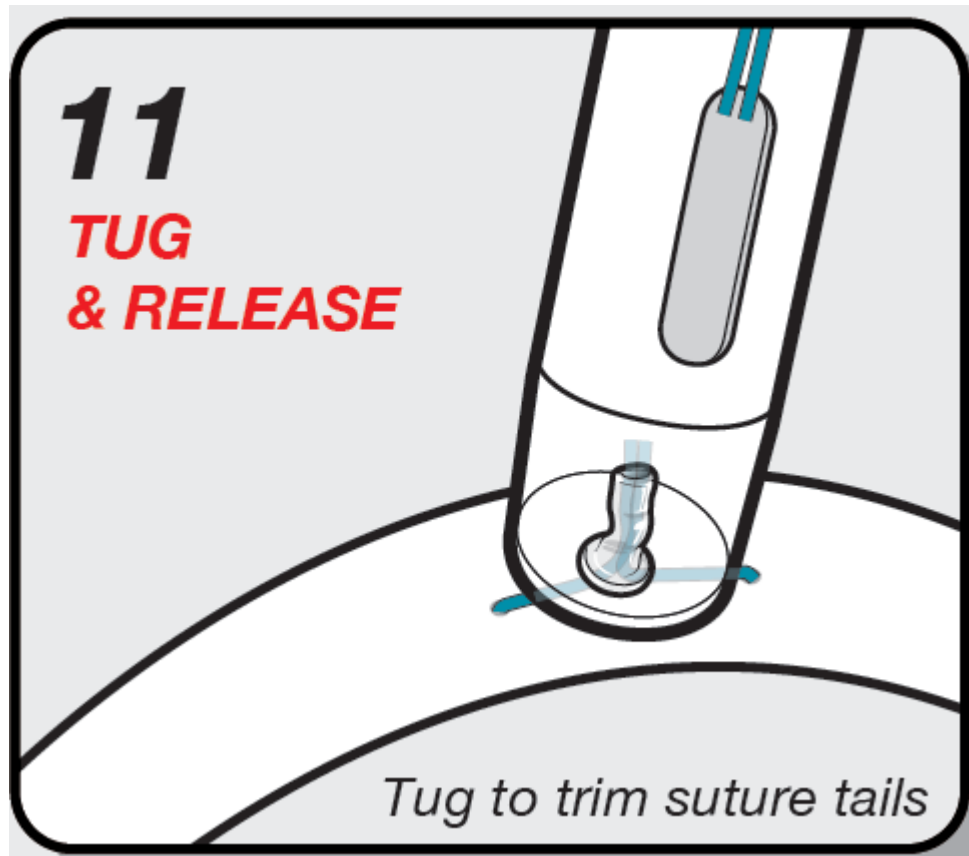


**SQUEEZE** the purple lever until it stops, maintain the device tip's position, **HOLD** lever for one second.

# 10) Squeeze & Hold

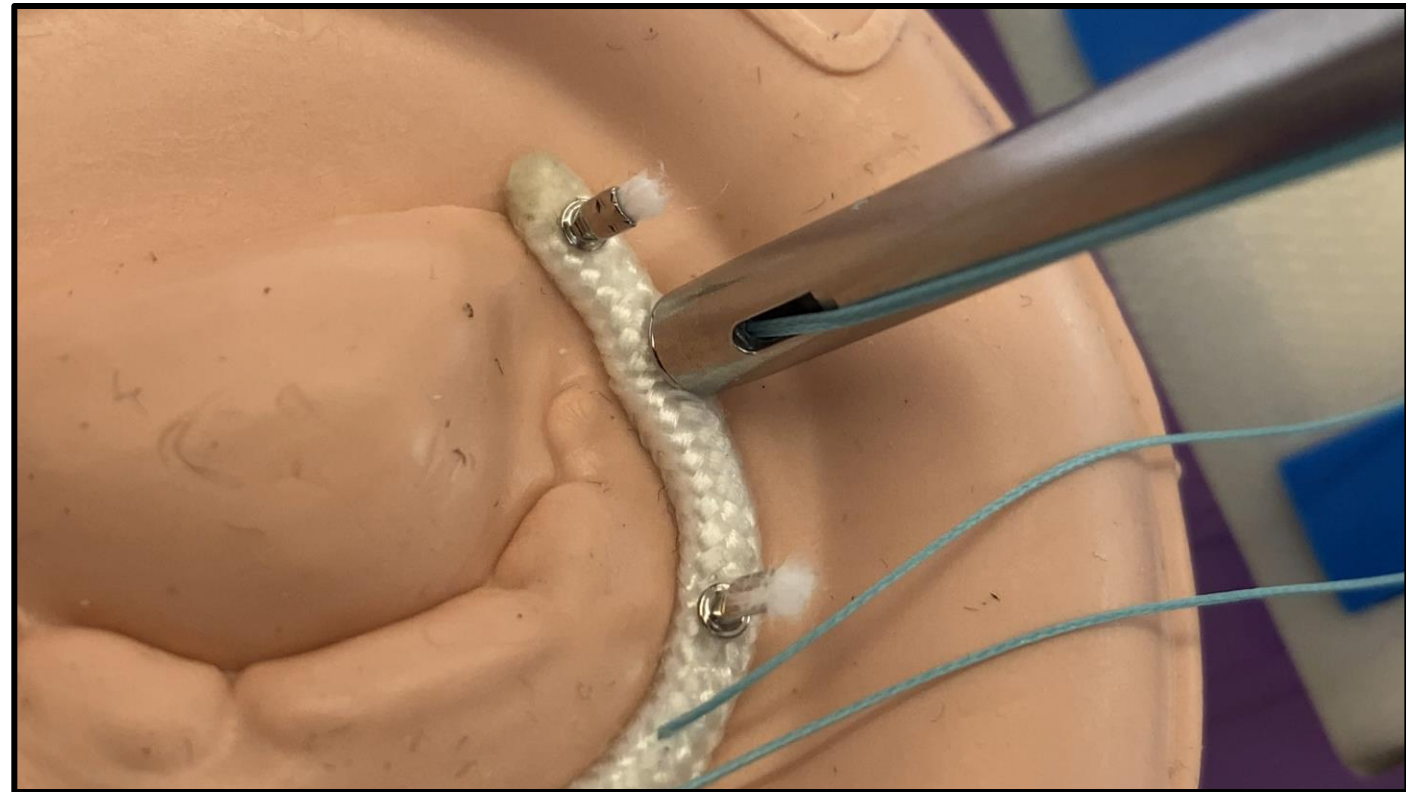
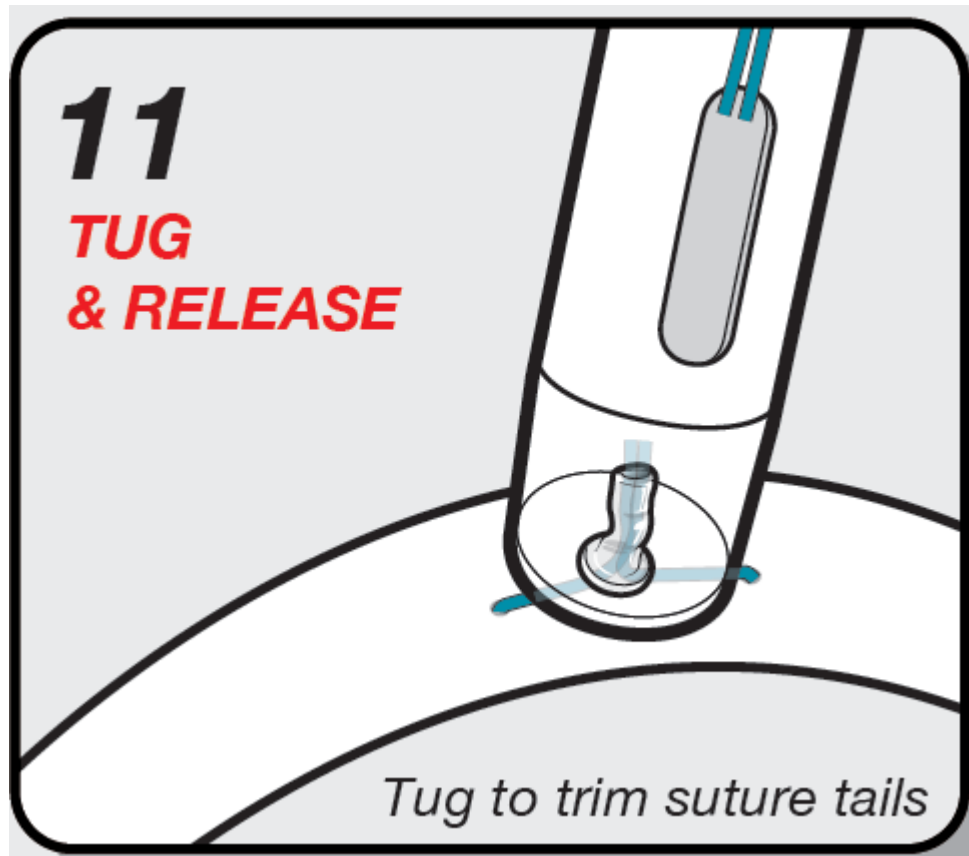


# 11) Tug & Release



**TUG** the suture gently to cut free both suture tails and **RELEASE** the purple lever fully to release the crimped *COR-KNOT<sup>®</sup> FASTENER*.

# 11) Tug & Release

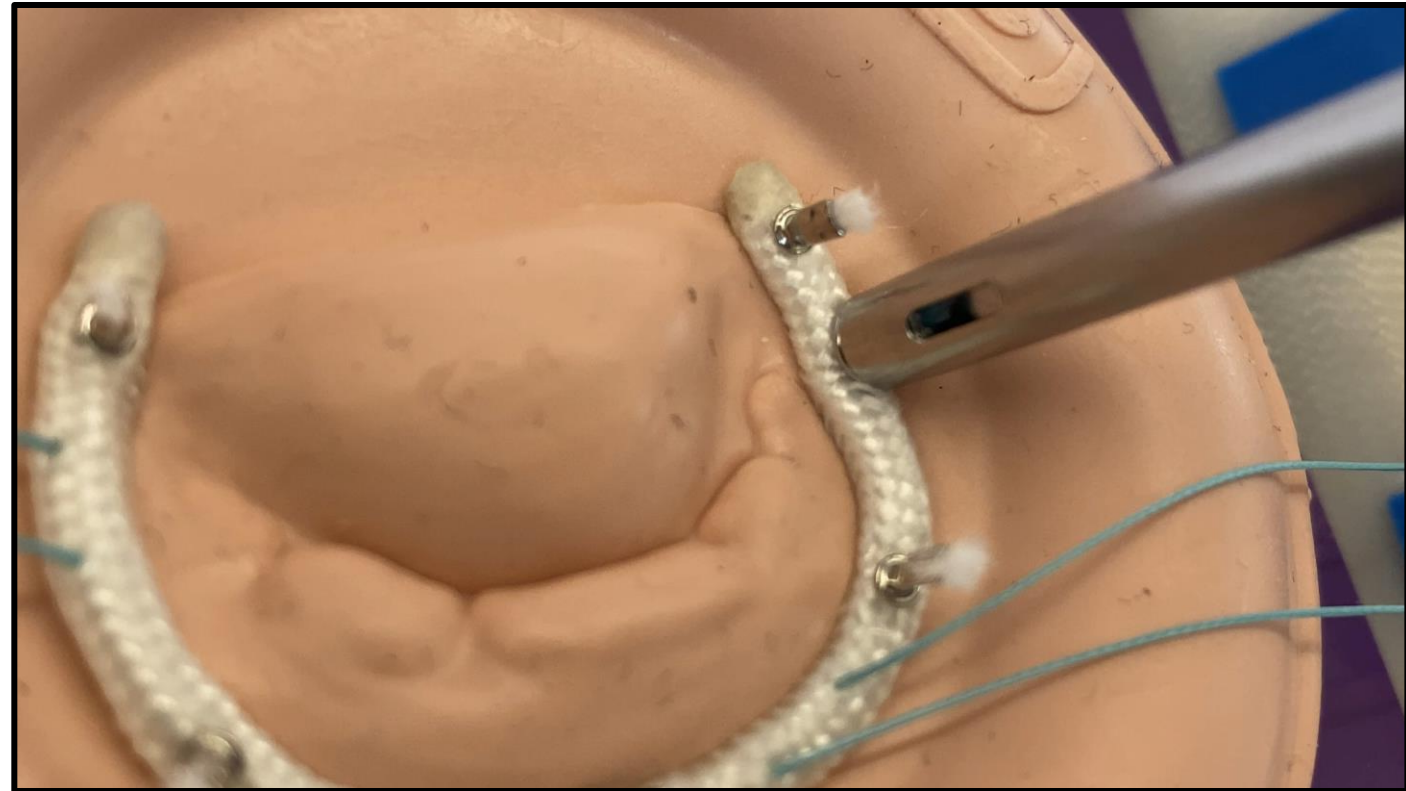


# 12) Remove Device

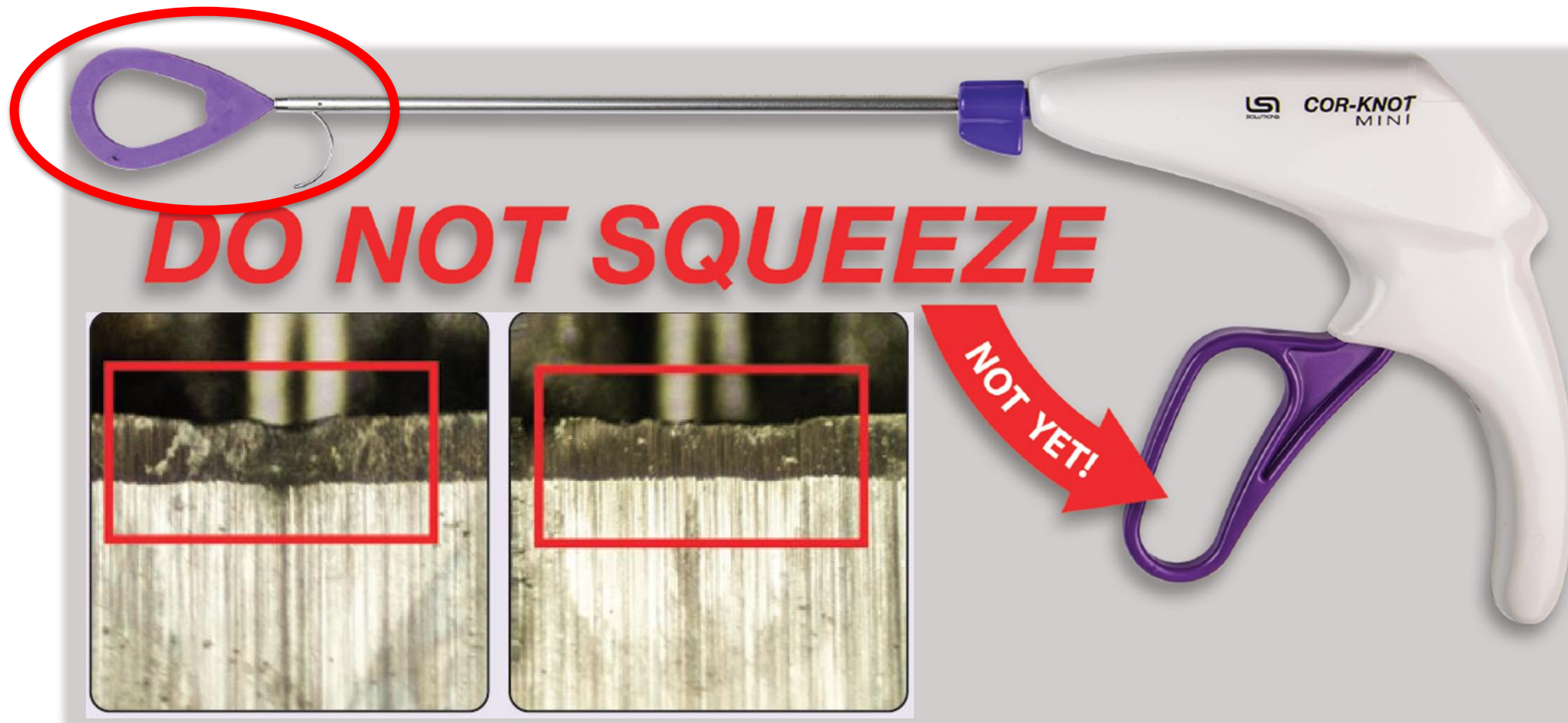


**REMOVE DEVICE** and inspect to ensure *COR-KNOT*® *FASTENER* and suture tails are oriented away from delicate tissue and prosthetic structures.

# 12) Remove Device



# Please Note





Thank You